



Board of County Commissioners • Escambia County, Florida

Wedgewood Area Soil Monitoring

Summary Report for Monitoring Event Samples Collected December 3, 2015

Prepared by: Escambia County
Natural Resources Management Department
Water Quality & Land Management Division

December 23, 2015

Executive Summary

Escambia County Natural Resources Management Department received direction from County Administration to sample soil at public recreational facilities located in the Wedgewood Community. Concerns were raised by area residents regarding possible soil contamination around the Rolling Hills Construction & Demolition Debris Facility (1333 West Pinestead Road) from dust generated while the facility was operational. The facility has not received new waste since May 2015.

A total of four sample locations were selected at public facilities north and west of the C&DD facility. Samples were collected at Lewis Powell Park (north ball field), Lewis Powell Park (south ball field), Wedgewood Community Center Pavilion, and Wedgewood Community Park. A fifth sample location was selected at the Southwest Sports Complex (northwest ball field) located off Bauer Road to serve as a background sample. Location maps identifying sample locations are provided as Figures 1 and 2 of this report. Samples were collected on December 3, 2015.

Each individual sample was a composite of 12 subsamples collected in close proximity. Soil was collected from each predetermined location along the four cardinal directions (i.e. north, south, east, west) at the intersection of three concentric circles. The radius of the three concentric circles varied slightly among sites to match conditions. The radius of the inner most circle was always three feet. The outer most circle extended to the edge of the existing vegetation line (24-40 feet). The radius of the remaining circle was the midpoint between the inner and outer circle (13.5-21.5 feet). Since the concern is related to deposition from dust, all subsamples were collected from the uppermost 0.5 inches of the soil profile. Field sheets and notes are provided as Appendix II of this report.

Samples were sent to an independent third party NELAP certified laboratory (TestAmerica, Pensacola, FL) for analysis. All samples collected were analyzed for semi-volatiles, polychlorinated biphenyls (PCBs), asbestos, and trace metals (antimony, arsenic, beryllium, cadmium, chromium, copper, lead, mercury, nickel, selenium, silver, thallium, zinc).

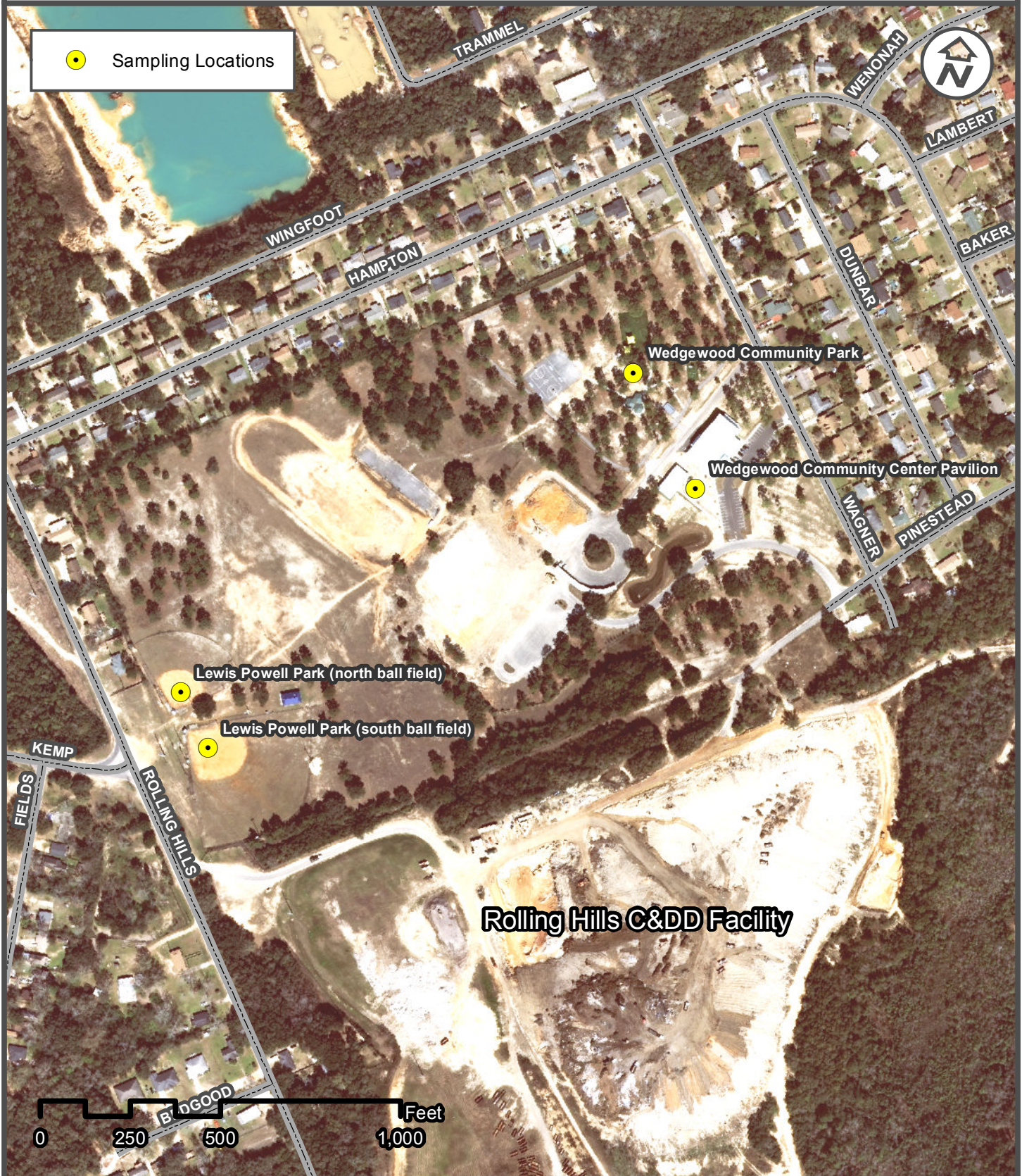
It is important to note the purpose of this study was to evaluate the potential existence of elevated levels of contaminants of concern within surface soils at Escambia County recreational facilities located in the Wedgewood area. Source identification for any soil contamination detected would require additional sampling and analysis.

Compounds analyzed, but not detected, are flagged in the following table and corresponding laboratory report with a "U" qualifier. A summary of detection is provided in Table 1. Some detections were low levels between the laboratory method detection limit (MDL) and practical quantitation limit (PQL). These values are too close to the MDL for the laboratory to provide actual results. Therefore, low level detections flagged with an "I" qualifier should be considered estimated values. The complete TestAmerica laboratory report is provided as Appendix I.

The concentration of detected analytes was evaluated against Florida Soil Clean Up Target Levels for direct residential exposure (Fla. Admin. Code R 62-777). Of the analytes detected, only arsenic was comparable to the corresponding target level. Arsenic levels at the three ball field locations, including the background site, ranged from 2.6-3.6 mg/kg. Elevated levels of naturally occurring arsenic has been well documented in Florida soils. Monitoring found no unexpected levels of contaminants. Results do not support concerns of soil contamination from dust deposition.

Wedgewood Area Soil Monitoring

Figure I - Sampling Locations



Wedgewood Area Soil Monitoring

Figure II - Background Location



TABLE 1

SUMMARY OF DETECTED CONSTITUENTS IN SOIL

WEDGEWOOD AREA SOIL MONITORING

PARAMETER	UNITS	Cleanup Target Level (Residential Exposure)*	Southwest Sports Complex (northwest ball field)	Lewis Powell Park (north ball field)	Lewis Powell Park (south ball field)	Wedgewood Community Center Pavilion	Wedgewood Community Park
			12/3/2015	12/3/2015	12/3/2015	12/3/2015	12/3/2015
Organic Constituents							
Bis(2-ethylhexyl) phthalate	mg/Kg	72	< 0.036 U	< 0.035 U	< 0.035 U	< 0.036 U	0.04 I
Inorganic Constituents							
Antimony	mg/Kg	27	0.17 I V	< 0.12 U	0.13 I V	< 0.12 U	0.18 I V
Arsenic	mg/Kg	2.1	3.4	2.6	3.6	0.75	0.92
Beryllium	mg/Kg	120	0.06 I	0.05 I	0.041 I	0.034 I	< 0.028 U
Chromium	mg/Kg	210	13	11	13	3.1	3.6
Copper	mg/Kg	150	2.8	2.5	3.5	2.2	3.8
Lead	mg/Kg	400	2.4	2.3	2.6	3.5	5.1
Mercury	mg/Kg	3	< 0.0082 U	< 0.0081 U	< 0.0083 U	< 0.0084 U	0.012 I
Nickel	mg/Kg	340	1.3	1.2	1.4	1.0	1.3
Selenium	mg/Kg	440	0.073 I	0.061 I	0.079 I	0.076 I	0.11 I
Zinc	mg/Kg	26,000	3.6 I	5.1	5.5	7.4	15

Notes:

BOLD = Exceeds regulatory limit

mg/Kg = milligrams per kilogram

U = Indicates that the compound was analyzed for but not detected.

I = The reported value is between the laboratory method detection limit and the laboratory practical quantitation limit.

V = Indicates the analyte was detected in both the sample and the associated method blank.

* = Cleanup Target Levels for Residential Exposure based on Fla. Admin. Code R 62-777

Appendix I
TestAmerica
Laboratory Results

TestAmerica

THE LEADER IN ENVIRONMENTAL TESTING

ANALYTICAL REPORT

TestAmerica Laboratories, Inc.

TestAmerica Pensacola

3355 McLemore Drive

Pensacola, FL 32514

Tel: (850)474-1001

TestAmerica Job ID: 400-114676-1

TestAmerica SDG: Wedgewood Community Ballpark

Client Project/Site: Wedgewood Community Soil Monitoring Plan

For:

Escambia County Water Quality Division

3363 West Park Place

Pensacola, Florida 32505

Attn: Christy Draper



Authorized for release by:

12/15/2015 11:57:25 AM

Carolyn Hooper, Project Manager I

(850)474-1001

carolyn.hooper@testamericainc.com

LINKS

Review your project results through

Total Access

Have a Question?



Visit us at:

www.testamericainc.com

The test results in this report meet all 2003 NELAC and 2009 TNI requirements for accredited parameters, exceptions are noted in this report. This report may not be reproduced except in full, and with written approval from the laboratory. For questions please contact the Project Manager at the e-mail address or telephone number listed on this page.

This report has been electronically signed and authorized by the signatory. Electronic signature is intended to be the legally binding equivalent of a traditionally handwritten signature.

Results relate only to the items tested and the sample(s) as received by the laboratory.

1

2

3

4

5

6

7

8

9

10

11

12

13

14

15



Table of Contents

Cover Page	1
Table of Contents	2
Case Narrative	3
Sample Summary	4
Detection Summary	5
Client Sample Results	7
Definitions	18
Method Summary	19
Chronicle	20
QC Association	25
QC Sample Results	28
Chain of Custody	33
Receipt Checklists	34
Certification Summary	35
Subcontract Data	36

Case Narrative

Client: Escambia County Water Quality Division
Project/Site: Wedgewood Community Soil Monitoring Plan

TestAmerica Job ID: 400-114676-1
SDG: Wedgewood Community Ballpark

Job ID: 400-114676-1

Laboratory: TestAmerica Pensacola

Narrative

Job Narrative 400-114676-1

Receipt

The samples were received on 12/3/2015 1:08 PM; the samples arrived in good condition, properly preserved and, where required, on ice. The temperature of the cooler at receipt was 3.5°C.

GC/MS Semi VOA

Method 8270D: The laboratory control sample (LCS) and / or laboratory control sample duplicate (LCSD) for preparation batch 400-285957 and analytical batch 400-286912 recovered outside control limits for the following analytes: Benzo[b]fluoranthene. These analytes were biased high in the LCS and were not detected in the associated samples; therefore, the data have been reported.

GC Semi VOA

Method 8082A: The matrix spike / matrix spike duplicate (MS/MSD) recoveries for preparation batch 400-285915 and analytical batch 400-286367 were outside control limits. Sample matrix interference is suspected because the associated laboratory control sample (LCS) recovery was within acceptance limits.

Metals

Method 6020: The method blank for preparation batch 400-286003 and analytical batch 400-286243 contained Antimony above the method detection limit. This target analyte concentration was less than the reporting limit (RL); therefore, re-extraction and/or re-analysis of samples was not performed.

The matrix spike duplicate (MSD) recoveries for preparation batch 400-286003 and analytical batch 400-286243 were outside control limits for Zinc. Non-homogeneity is suspected because the associated laboratory control sample (LCS) recovery was within acceptance limits.

No additional analytical or quality issues were noted, other than those described above or in the Definitions/Glossary page.

Sample Summary

Client: Escambia County Water Quality Division
Project/Site: Wedgewood Community Soil Monitoring Plan

TestAmerica Job ID: 400-114676-1
SDG: Wedgewood Community Ballpark

Lab Sample ID	Client Sample ID	Matrix	Collected	Received
400-114676-1	SWSC	Solid	12/03/15 10:20	12/03/15 13:08
400-114676-2	LEWIS POWELL PARK - NORTH	Solid	12/03/15 11:15	12/03/15 13:08
400-114676-3	LEWIS POWELL PARK - SOUTH	Solid	12/03/15 11:40	12/03/15 13:08
400-114676-4	WEDGEWOOD PAVILLION	Solid	12/03/15 12:15	12/03/15 13:08
400-114676-5	WEDGEWOOD PLAYGROUND	Solid	12/03/15 12:35	12/03/15 13:08

1

2

3

4

5

6

7

8

9

10

11

12

13

14

15

Detection Summary

Client: Escambia County Water Quality Division
Project/Site: Wedgewood Community Soil Monitoring Plan

TestAmerica Job ID: 400-114676-1
SDG: Wedgewood Community Ballpark

Client Sample ID: SWSC

Lab Sample ID: 400-114676-1

Analyte	Result	Qualifier	PQL	MDL	Unit	Dil Fac	D	Method	Prep Type
Antimony	0.17	I V	0.54	0.13	mg/Kg	10	☼	6020	Total/NA
Arsenic	3.4		0.54	0.12	mg/Kg	10	☼	6020	Total/NA
Chromium	13		0.54	0.21	mg/Kg	10	☼	6020	Total/NA
Copper	2.8		1.1	0.43	mg/Kg	10	☼	6020	Total/NA
Nickel	1.3		0.54	0.17	mg/Kg	10	☼	6020	Total/NA
Selenium	0.073	I	0.54	0.052	mg/Kg	10	☼	6020	Total/NA
Zinc	3.6	I	4.3	2.2	mg/Kg	10	☼	6020	Total/NA
Beryllium - RA	0.060	I	0.54	0.028	mg/Kg	10	☼	6020	Total/NA
Lead - RA	2.4		0.27	0.080	mg/Kg	10	☼	6020	Total/NA

Client Sample ID: LEWIS POWELL PARK - NORTH

Lab Sample ID: 400-114676-2

Analyte	Result	Qualifier	PQL	MDL	Unit	Dil Fac	D	Method	Prep Type
Arsenic	2.6		0.52	0.11	mg/Kg	10	☼	6020	Total/NA
Chromium	11		0.52	0.20	mg/Kg	10	☼	6020	Total/NA
Copper	2.5		1.0	0.42	mg/Kg	10	☼	6020	Total/NA
Nickel	1.2		0.52	0.17	mg/Kg	10	☼	6020	Total/NA
Selenium	0.061	I	0.52	0.050	mg/Kg	10	☼	6020	Total/NA
Zinc	5.1		4.2	2.1	mg/Kg	10	☼	6020	Total/NA
Beryllium - RA	0.050	I	0.52	0.027	mg/Kg	10	☼	6020	Total/NA
Lead - RA	2.3		0.26	0.077	mg/Kg	10	☼	6020	Total/NA

Client Sample ID: LEWIS POWELL PARK - SOUTH

Lab Sample ID: 400-114676-3

Analyte	Result	Qualifier	PQL	MDL	Unit	Dil Fac	D	Method	Prep Type
Antimony	0.13	I V	0.50	0.12	mg/Kg	10	☼	6020	Total/NA
Arsenic	3.6		0.50	0.11	mg/Kg	10	☼	6020	Total/NA
Chromium	13		0.50	0.19	mg/Kg	10	☼	6020	Total/NA
Copper	3.5		0.99	0.40	mg/Kg	10	☼	6020	Total/NA
Nickel	1.4		0.50	0.16	mg/Kg	10	☼	6020	Total/NA
Selenium	0.079	I	0.50	0.048	mg/Kg	10	☼	6020	Total/NA
Zinc	5.5		4.0	2.0	mg/Kg	10	☼	6020	Total/NA
Beryllium - RA	0.041	I	0.50	0.026	mg/Kg	10	☼	6020	Total/NA
Lead - RA	2.6		0.25	0.073	mg/Kg	10	☼	6020	Total/NA

Client Sample ID: WEDGEWOOD PAVILLION

Lab Sample ID: 400-114676-4

Analyte	Result	Qualifier	PQL	MDL	Unit	Dil Fac	D	Method	Prep Type
Arsenic	0.75		0.52	0.11	mg/Kg	10	☼	6020	Total/NA
Chromium	3.1		0.52	0.20	mg/Kg	10	☼	6020	Total/NA
Copper	2.2		1.0	0.41	mg/Kg	10	☼	6020	Total/NA
Nickel	1.0		0.52	0.17	mg/Kg	10	☼	6020	Total/NA
Selenium	0.076	I	0.52	0.050	mg/Kg	10	☼	6020	Total/NA
Zinc	7.4		4.1	2.1	mg/Kg	10	☼	6020	Total/NA
Beryllium - RA	0.034	I	0.52	0.027	mg/Kg	10	☼	6020	Total/NA
Lead - RA	3.5		0.26	0.077	mg/Kg	10	☼	6020	Total/NA

Client Sample ID: WEDGEWOOD PLAYGROUND

Lab Sample ID: 400-114676-5

This Detection Summary does not include radiochemical test results.

TestAmerica Pensacola

Detection Summary

Client: Escambia County Water Quality Division
 Project/Site: Wedgewood Community Soil Monitoring Plan

TestAmerica Job ID: 400-114676-1
 SDG: Wedgewood Community Ballpark

Client Sample ID: WEDGEWOOD PLAYGROUND (Continued)

Lab Sample ID: 400-114676-5

Analyte	Result	Qualifier	PQL	MDL	Unit	Dil Fac	D	Method	Prep Type
Bis(2-ethylhexyl) phthalate	0.040	I	0.36	0.036	mg/Kg	1	☼	8270D	Total/NA
Antimony	0.18	I V	0.54	0.13	mg/Kg	10	☼	6020	Total/NA
Arsenic	0.92		0.54	0.12	mg/Kg	10	☼	6020	Total/NA
Chromium	3.6		0.54	0.21	mg/Kg	10	☼	6020	Total/NA
Copper	3.8		1.1	0.43	mg/Kg	10	☼	6020	Total/NA
Nickel	1.3		0.54	0.17	mg/Kg	10	☼	6020	Total/NA
Selenium	0.11	I	0.54	0.052	mg/Kg	10	☼	6020	Total/NA
Zinc	15		4.3	2.2	mg/Kg	10	☼	6020	Total/NA
Lead - RA	5.1		0.27	0.080	mg/Kg	10	☼	6020	Total/NA
Mercury	0.012	I	0.015	0.0088	mg/Kg	1	☼	7471A	Total/NA

This Detection Summary does not include radiochemical test results.

TestAmerica Pensacola

Client Sample Results

Client: Escambia County Water Quality Division
 Project/Site: Wedgewood Community Soil Monitoring Plan

TestAmerica Job ID: 400-114676-1
 SDG: Wedgewood Community Ballpark

Client Sample ID: SWSC

Date Collected: 12/03/15 10:20

Date Received: 12/03/15 13:08

Lab Sample ID: 400-114676-1

Matrix: Solid

Percent Solids: 92.2

Method: 8270D - Semivolatile Organic Compounds (GC/MS)

Analyte	Result	Qualifier	PQL	MDL	Unit	D	Prepared	Analyzed	Dil Fac
Acenaphthene	0.036	U	0.36	0.036	mg/Kg	☼	12/04/15 09:17	12/07/15 19:21	1
Acenaphthylene	0.036	U	0.36	0.036	mg/Kg	☼	12/04/15 09:17	12/07/15 19:21	1
Anthracene	0.036	U	0.36	0.036	mg/Kg	☼	12/04/15 09:17	12/07/15 19:21	1
Benzidine	0.11	U	1.1	0.11	mg/Kg	☼	12/04/15 09:17	12/07/15 19:21	1
Benzo[a]anthracene	0.036	U	0.36	0.036	mg/Kg	☼	12/04/15 09:17	12/07/15 19:21	1
Benzo[a]pyrene	0.036	U	0.36	0.036	mg/Kg	☼	12/04/15 09:17	12/07/15 19:21	1
Benzo[b]fluoranthene	0.036	U J3	0.36	0.036	mg/Kg	☼	12/04/15 09:17	12/07/15 19:21	1
Benzo[g,h,i]perylene	0.036	U	0.36	0.036	mg/Kg	☼	12/04/15 09:17	12/07/15 19:21	1
Benzo[k]fluoranthene	0.036	U	0.36	0.036	mg/Kg	☼	12/04/15 09:17	12/07/15 19:21	1
Bis(2-chloroethoxy)methane	0.036	U	0.36	0.036	mg/Kg	☼	12/04/15 09:17	12/07/15 19:21	1
Bis(2-chloroethyl)ether	0.036	U	0.36	0.036	mg/Kg	☼	12/04/15 09:17	12/07/15 19:21	1
Bis(2-ethylhexyl) phthalate	0.036	U	0.36	0.036	mg/Kg	☼	12/04/15 09:17	12/07/15 19:21	1
Fluoranthene	0.036	U	0.36	0.036	mg/Kg	☼	12/04/15 09:17	12/07/15 19:21	1
Fluorene	0.036	U	0.36	0.036	mg/Kg	☼	12/04/15 09:17	12/07/15 19:21	1
Hexachlorobenzene	0.11	U	0.36	0.11	mg/Kg	☼	12/04/15 09:17	12/07/15 19:21	1
Hexachlorobutadiene	0.036	U	0.36	0.036	mg/Kg	☼	12/04/15 09:17	12/07/15 19:21	1
Hexachlorocyclopentadiene	0.071	U	0.36	0.071	mg/Kg	☼	12/04/15 09:17	12/07/15 19:21	1
Hexachloroethane	0.11	U	0.36	0.11	mg/Kg	☼	12/04/15 09:17	12/07/15 19:21	1
Indeno[1,2,3-cd]pyrene	0.036	U	0.36	0.036	mg/Kg	☼	12/04/15 09:17	12/07/15 19:21	1
Isophorone	0.036	U	0.36	0.036	mg/Kg	☼	12/04/15 09:17	12/07/15 19:21	1
Naphthalene	0.036	U	0.36	0.036	mg/Kg	☼	12/04/15 09:17	12/07/15 19:21	1
Nitrobenzene	0.036	U	0.36	0.036	mg/Kg	☼	12/04/15 09:17	12/07/15 19:21	1
Pyrene	0.036	U	0.36	0.036	mg/Kg	☼	12/04/15 09:17	12/07/15 19:21	1
Phenanthrene	0.036	U	0.36	0.036	mg/Kg	☼	12/04/15 09:17	12/07/15 19:21	1
Phenol	0.036	U	0.36	0.036	mg/Kg	☼	12/04/15 09:17	12/07/15 19:21	1
Pentachlorophenol	0.071	U	0.71	0.071	mg/Kg	☼	12/04/15 09:17	12/07/15 19:21	1
Chrysene	0.036	U	0.36	0.036	mg/Kg	☼	12/04/15 09:17	12/07/15 19:21	1
4-Bromophenyl phenyl ether	0.036	U	0.36	0.036	mg/Kg	☼	12/04/15 09:17	12/07/15 19:21	1
Butyl benzyl phthalate	0.036	U	0.36	0.036	mg/Kg	☼	12/04/15 09:17	12/07/15 19:21	1
4-Chloro-3-methylphenol	0.036	U	0.36	0.036	mg/Kg	☼	12/04/15 09:17	12/07/15 19:21	1
4-Chlorophenyl phenyl ether	0.036	U	0.36	0.036	mg/Kg	☼	12/04/15 09:17	12/07/15 19:21	1
4,6-Dinitro-2-methylphenol	0.036	U	0.36	0.036	mg/Kg	☼	12/04/15 09:17	12/07/15 19:21	1
4-Nitrophenol	0.12	U	0.36	0.12	mg/Kg	☼	12/04/15 09:17	12/07/15 19:21	1
2-Chloronaphthalene	0.036	U	0.36	0.036	mg/Kg	☼	12/04/15 09:17	12/07/15 19:21	1
2-Chlorophenol	0.036	U	0.36	0.036	mg/Kg	☼	12/04/15 09:17	12/07/15 19:21	1
3,3'-Dichlorobenzidine	0.036	U	0.36	0.036	mg/Kg	☼	12/04/15 09:17	12/07/15 19:21	1
1,2,4-Trichlorobenzene	0.036	U	0.36	0.036	mg/Kg	☼	12/04/15 09:17	12/07/15 19:21	1
2,4,6-Trichlorophenol	0.036	U	0.36	0.036	mg/Kg	☼	12/04/15 09:17	12/07/15 19:21	1
N-Nitrosodi-n-propylamine	0.12	U	0.36	0.12	mg/Kg	☼	12/04/15 09:17	12/07/15 19:21	1
N-Nitrosodimethylamine	0.071	U	0.36	0.071	mg/Kg	☼	12/04/15 09:17	12/07/15 19:21	1
N-Nitrosodiphenylamine	0.036	U	0.36	0.036	mg/Kg	☼	12/04/15 09:17	12/07/15 19:21	1
2-Nitrophenol	0.036	U	0.36	0.036	mg/Kg	☼	12/04/15 09:17	12/07/15 19:21	1
Dibenz(a,h)anthracene	0.036	U	0.36	0.036	mg/Kg	☼	12/04/15 09:17	12/07/15 19:21	1
Di-n-butyl phthalate	0.036	U	0.36	0.036	mg/Kg	☼	12/04/15 09:17	12/07/15 19:21	1
2,4-Dichlorophenol	0.036	U	0.36	0.036	mg/Kg	☼	12/04/15 09:17	12/07/15 19:21	1
2,4-Dimethylphenol	0.036	U	0.36	0.036	mg/Kg	☼	12/04/15 09:17	12/07/15 19:21	1
2,4-Dinitrophenol	0.31	U	1.1	0.31	mg/Kg	☼	12/04/15 09:17	12/07/15 19:21	1
2,4-Dinitrotoluene	0.036	U	0.36	0.036	mg/Kg	☼	12/04/15 09:17	12/07/15 19:21	1
2,6-Dinitrotoluene	0.036	U	0.36	0.036	mg/Kg	☼	12/04/15 09:17	12/07/15 19:21	1

TestAmerica Pensacola

Client Sample Results

Client: Escambia County Water Quality Division
 Project/Site: Wedgewood Community Soil Monitoring Plan

TestAmerica Job ID: 400-114676-1
 SDG: Wedgewood Community Ballpark

Client Sample ID: SWSC
Date Collected: 12/03/15 10:20
Date Received: 12/03/15 13:08

Lab Sample ID: 400-114676-1
Matrix: Solid
Percent Solids: 92.2

Method: 8270D - Semivolatile Organic Compounds (GC/MS) (Continued)

Analyte	Result	Qualifier	PQL	MDL	Unit	D	Prepared	Analyzed	Dil Fac
Di-n-octyl phthalate	0.036	U	0.36	0.036	mg/Kg	☼	12/04/15 09:17	12/07/15 19:21	1
Dimethyl phthalate	0.036	U	0.36	0.036	mg/Kg	☼	12/04/15 09:17	12/07/15 19:21	1
Diethyl phthalate	0.036	U	0.36	0.036	mg/Kg	☼	12/04/15 09:17	12/07/15 19:21	1
1,2-Dichlorobenzene	0.036	U	0.36	0.036	mg/Kg	☼	12/04/15 09:17	12/07/15 19:21	1
1,3-Dichlorobenzene	0.036	U	0.36	0.036	mg/Kg	☼	12/04/15 09:17	12/07/15 19:21	1
1,4-Dichlorobenzene	0.036	U	0.36	0.036	mg/Kg	☼	12/04/15 09:17	12/07/15 19:21	1
bis (2-chloroisopropyl) ether	0.036	U	0.36	0.036	mg/Kg	☼	12/04/15 09:17	12/07/15 19:21	1

Surrogate	%Recovery	Qualifier	Limits	Prepared	Analyzed	Dil Fac
2,4,6-Tribromophenol (Surr)	40		10 - 150	12/04/15 09:17	12/07/15 19:21	1
2-Fluorobiphenyl	42		27 - 127	12/04/15 09:17	12/07/15 19:21	1
2-Fluorophenol (Surr)	47		25 - 128	12/04/15 09:17	12/07/15 19:21	1
Nitrobenzene-d5 (Surr)	47		15 - 136	12/04/15 09:17	12/07/15 19:21	1
Phenol-d5 (Surr)	47		29 - 130	12/04/15 09:17	12/07/15 19:21	1
Terphenyl-d14 (Surr)	37		24 - 146	12/04/15 09:17	12/07/15 19:21	1

Method: 8082A - Polychlorinated Biphenyls (PCBs) by Gas Chromatography

Analyte	Result	Qualifier	PQL	MDL	Unit	D	Prepared	Analyzed	Dil Fac
PCB-1016	0.0026	U	0.018	0.0026	mg/Kg	☼	12/04/15 07:17	12/08/15 14:51	1
PCB-1221	0.0085	U	0.018	0.0085	mg/Kg	☼	12/04/15 07:17	12/08/15 14:51	1
PCB-1232	0.012	U	0.018	0.012	mg/Kg	☼	12/04/15 07:17	12/08/15 14:51	1
PCB-1242	0.0088	U	0.018	0.0088	mg/Kg	☼	12/04/15 07:17	12/08/15 14:51	1
PCB-1248	0.0035	U	0.018	0.0035	mg/Kg	☼	12/04/15 07:17	12/08/15 14:51	1
PCB-1254	0.0022	U	0.018	0.0022	mg/Kg	☼	12/04/15 07:17	12/08/15 14:51	1
PCB-1260	0.0013	U	0.018	0.0013	mg/Kg	☼	12/04/15 07:17	12/08/15 14:51	1

Surrogate	%Recovery	Qualifier	Limits	Prepared	Analyzed	Dil Fac
DCB Decachlorobiphenyl	69		26 - 129	12/04/15 07:17	12/08/15 14:51	1
Tetrachloro-m-xylene	82		31 - 122	12/04/15 07:17	12/08/15 14:51	1

Method: 6020 - Metals (ICP/MS)

Analyte	Result	Qualifier	PQL	MDL	Unit	D	Prepared	Analyzed	Dil Fac
Antimony	0.17	I V	0.54	0.13	mg/Kg	☼	12/04/15 13:15	12/07/15 14:53	10
Arsenic	3.4		0.54	0.12	mg/Kg	☼	12/04/15 13:15	12/07/15 14:53	10
Cadmium	0.22	U	0.54	0.22	mg/Kg	☼	12/04/15 13:15	12/07/15 14:53	10
Chromium	13		0.54	0.21	mg/Kg	☼	12/04/15 13:15	12/07/15 14:53	10
Copper	2.8		1.1	0.43	mg/Kg	☼	12/04/15 13:15	12/07/15 14:53	10
Nickel	1.3		0.54	0.17	mg/Kg	☼	12/04/15 13:15	12/07/15 14:53	10
Selenium	0.073	I	0.54	0.052	mg/Kg	☼	12/04/15 13:15	12/07/15 14:53	10
Silver	0.021	U	0.11	0.021	mg/Kg	☼	12/04/15 13:15	12/07/15 14:53	10
Thallium	0.097	U	0.11	0.097	mg/Kg	☼	12/04/15 13:15	12/07/15 14:53	10
Zinc	3.6	I	4.3	2.2	mg/Kg	☼	12/04/15 13:15	12/07/15 14:53	10

Method: 6020 - Metals (ICP/MS) - RA

Analyte	Result	Qualifier	PQL	MDL	Unit	D	Prepared	Analyzed	Dil Fac
Beryllium	0.060	I	0.54	0.028	mg/Kg	☼	12/04/15 13:15	12/09/15 13:58	10
Lead	2.4		0.27	0.080	mg/Kg	☼	12/04/15 13:15	12/09/15 13:58	10

Method: 7471A - Mercury (CVAA)

Analyte	Result	Qualifier	PQL	MDL	Unit	D	Prepared	Analyzed	Dil Fac
Mercury	0.0082	U	0.014	0.0082	mg/Kg	☼	12/04/15 12:08	12/06/15 17:11	1

TestAmerica Pensacola

Client Sample Results

Client: Escambia County Water Quality Division
 Project/Site: Wedgewood Community Soil Monitoring Plan

TestAmerica Job ID: 400-114676-1
 SDG: Wedgewood Community Ballpark

General Chemistry

Analyte	Result	Qualifier	PQL	MDL	Unit	D	Prepared	Analyzed	Dil Fac
Percent Moisture	7.8		0.10	0.10	%			12/04/15 17:34	1

Client Sample ID: LEWIS POWELL PARK - NORTH

Lab Sample ID: 400-114676-2

Date Collected: 12/03/15 11:15

Matrix: Solid

Date Received: 12/03/15 13:08

Percent Solids: 94.0

Method: 8270D - Semivolatile Organic Compounds (GC/MS)

Analyte	Result	Qualifier	PQL	MDL	Unit	D	Prepared	Analyzed	Dil Fac
Acenaphthene	0.035	U	0.35	0.035	mg/Kg	☼	12/04/15 09:17	12/07/15 19:59	1
Acenaphthylene	0.035	U	0.35	0.035	mg/Kg	☼	12/04/15 09:17	12/07/15 19:59	1
Anthracene	0.035	U	0.35	0.035	mg/Kg	☼	12/04/15 09:17	12/07/15 19:59	1
Benzidine	0.10	U	1.0	0.10	mg/Kg	☼	12/04/15 09:17	12/07/15 19:59	1
Benzo[a]anthracene	0.035	U	0.35	0.035	mg/Kg	☼	12/04/15 09:17	12/07/15 19:59	1
Benzo[a]pyrene	0.035	U	0.35	0.035	mg/Kg	☼	12/04/15 09:17	12/07/15 19:59	1
Benzo[b]fluoranthene	0.035	U J3	0.35	0.035	mg/Kg	☼	12/04/15 09:17	12/07/15 19:59	1
Benzo[g,h,i]perylene	0.035	U	0.35	0.035	mg/Kg	☼	12/04/15 09:17	12/07/15 19:59	1
Benzo[k]fluoranthene	0.035	U	0.35	0.035	mg/Kg	☼	12/04/15 09:17	12/07/15 19:59	1
Bis(2-chloroethoxy)methane	0.035	U	0.35	0.035	mg/Kg	☼	12/04/15 09:17	12/07/15 19:59	1
Bis(2-chloroethyl)ether	0.035	U	0.35	0.035	mg/Kg	☼	12/04/15 09:17	12/07/15 19:59	1
Bis(2-ethylhexyl) phthalate	0.035	U	0.35	0.035	mg/Kg	☼	12/04/15 09:17	12/07/15 19:59	1
Fluoranthene	0.035	U	0.35	0.035	mg/Kg	☼	12/04/15 09:17	12/07/15 19:59	1
Fluorene	0.035	U	0.35	0.035	mg/Kg	☼	12/04/15 09:17	12/07/15 19:59	1
Hexachlorobenzene	0.10	U	0.35	0.10	mg/Kg	☼	12/04/15 09:17	12/07/15 19:59	1
Hexachlorobutadiene	0.035	U	0.35	0.035	mg/Kg	☼	12/04/15 09:17	12/07/15 19:59	1
Hexachlorocyclopentadiene	0.069	U	0.35	0.069	mg/Kg	☼	12/04/15 09:17	12/07/15 19:59	1
Hexachloroethane	0.10	U	0.35	0.10	mg/Kg	☼	12/04/15 09:17	12/07/15 19:59	1
Indeno[1,2,3-cd]pyrene	0.035	U	0.35	0.035	mg/Kg	☼	12/04/15 09:17	12/07/15 19:59	1
Isophorone	0.035	U	0.35	0.035	mg/Kg	☼	12/04/15 09:17	12/07/15 19:59	1
Naphthalene	0.035	U	0.35	0.035	mg/Kg	☼	12/04/15 09:17	12/07/15 19:59	1
Nitrobenzene	0.035	U	0.35	0.035	mg/Kg	☼	12/04/15 09:17	12/07/15 19:59	1
Pyrene	0.035	U	0.35	0.035	mg/Kg	☼	12/04/15 09:17	12/07/15 19:59	1
Phenanthrene	0.035	U	0.35	0.035	mg/Kg	☼	12/04/15 09:17	12/07/15 19:59	1
Phenol	0.035	U	0.35	0.035	mg/Kg	☼	12/04/15 09:17	12/07/15 19:59	1
Pentachlorophenol	0.069	U	0.69	0.069	mg/Kg	☼	12/04/15 09:17	12/07/15 19:59	1
Chrysene	0.035	U	0.35	0.035	mg/Kg	☼	12/04/15 09:17	12/07/15 19:59	1
4-Bromophenyl phenyl ether	0.035	U	0.35	0.035	mg/Kg	☼	12/04/15 09:17	12/07/15 19:59	1
Butyl benzyl phthalate	0.035	U	0.35	0.035	mg/Kg	☼	12/04/15 09:17	12/07/15 19:59	1
4-Chloro-3-methylphenol	0.035	U	0.35	0.035	mg/Kg	☼	12/04/15 09:17	12/07/15 19:59	1
4-Chlorophenyl phenyl ether	0.035	U	0.35	0.035	mg/Kg	☼	12/04/15 09:17	12/07/15 19:59	1
4,6-Dinitro-2-methylphenol	0.035	U	0.35	0.035	mg/Kg	☼	12/04/15 09:17	12/07/15 19:59	1
4-Nitrophenol	0.12	U	0.35	0.12	mg/Kg	☼	12/04/15 09:17	12/07/15 19:59	1
2-Chloronaphthalene	0.035	U	0.35	0.035	mg/Kg	☼	12/04/15 09:17	12/07/15 19:59	1
2-Chlorophenol	0.035	U	0.35	0.035	mg/Kg	☼	12/04/15 09:17	12/07/15 19:59	1
3,3'-Dichlorobenzidine	0.035	U	0.35	0.035	mg/Kg	☼	12/04/15 09:17	12/07/15 19:59	1
1,2,4-Trichlorobenzene	0.035	U	0.35	0.035	mg/Kg	☼	12/04/15 09:17	12/07/15 19:59	1
2,4,6-Trichlorophenol	0.035	U	0.35	0.035	mg/Kg	☼	12/04/15 09:17	12/07/15 19:59	1
N-Nitrosodi-n-propylamine	0.12	U	0.35	0.12	mg/Kg	☼	12/04/15 09:17	12/07/15 19:59	1
N-Nitrosodimethylamine	0.069	U	0.35	0.069	mg/Kg	☼	12/04/15 09:17	12/07/15 19:59	1
N-Nitrosodiphenylamine	0.035	U	0.35	0.035	mg/Kg	☼	12/04/15 09:17	12/07/15 19:59	1
2-Nitrophenol	0.035	U	0.35	0.035	mg/Kg	☼	12/04/15 09:17	12/07/15 19:59	1
Dibenz(a,h)anthracene	0.035	U	0.35	0.035	mg/Kg	☼	12/04/15 09:17	12/07/15 19:59	1
Di-n-butyl phthalate	0.035	U	0.35	0.035	mg/Kg	☼	12/04/15 09:17	12/07/15 19:59	1
2,4-Dichlorophenol	0.035	U	0.35	0.035	mg/Kg	☼	12/04/15 09:17	12/07/15 19:59	1

TestAmerica Pensacola

Client Sample Results

Client: Escambia County Water Quality Division
 Project/Site: Wedgewood Community Soil Monitoring Plan

TestAmerica Job ID: 400-114676-1
 SDG: Wedgewood Community Ballpark

Client Sample ID: LEWIS POWELL PARK - NORTH

Lab Sample ID: 400-114676-2

Date Collected: 12/03/15 11:15

Matrix: Solid

Date Received: 12/03/15 13:08

Percent Solids: 94.0

Method: 8270D - Semivolatile Organic Compounds (GC/MS) (Continued)

Analyte	Result	Qualifier	PQL	MDL	Unit	D	Prepared	Analyzed	Dil Fac
2,4-Dimethylphenol	0.035	U	0.35	0.035	mg/Kg	☼	12/04/15 09:17	12/07/15 19:59	1
2,4-Dinitrophenol	0.30	U	1.0	0.30	mg/Kg	☼	12/04/15 09:17	12/07/15 19:59	1
2,4-Dinitrotoluene	0.035	U	0.35	0.035	mg/Kg	☼	12/04/15 09:17	12/07/15 19:59	1
2,6-Dinitrotoluene	0.035	U	0.35	0.035	mg/Kg	☼	12/04/15 09:17	12/07/15 19:59	1
Di-n-octyl phthalate	0.035	U	0.35	0.035	mg/Kg	☼	12/04/15 09:17	12/07/15 19:59	1
Dimethyl phthalate	0.035	U	0.35	0.035	mg/Kg	☼	12/04/15 09:17	12/07/15 19:59	1
Diethyl phthalate	0.035	U	0.35	0.035	mg/Kg	☼	12/04/15 09:17	12/07/15 19:59	1
1,2-Dichlorobenzene	0.035	U	0.35	0.035	mg/Kg	☼	12/04/15 09:17	12/07/15 19:59	1
1,3-Dichlorobenzene	0.035	U	0.35	0.035	mg/Kg	☼	12/04/15 09:17	12/07/15 19:59	1
1,4-Dichlorobenzene	0.035	U	0.35	0.035	mg/Kg	☼	12/04/15 09:17	12/07/15 19:59	1
bis (2-chloroisopropyl) ether	0.035	U	0.35	0.035	mg/Kg	☼	12/04/15 09:17	12/07/15 19:59	1

Surrogate	%Recovery	Qualifier	Limits	Prepared	Analyzed	Dil Fac
2,4,6-Tribromophenol (Surr)	37		10 - 150	12/04/15 09:17	12/07/15 19:59	1
2-Fluorobiphenyl	42		27 - 127	12/04/15 09:17	12/07/15 19:59	1
2-Fluorophenol (Surr)	44		25 - 128	12/04/15 09:17	12/07/15 19:59	1
Nitrobenzene-d5 (Surr)	45		15 - 136	12/04/15 09:17	12/07/15 19:59	1
Phenol-d5 (Surr)	44		29 - 130	12/04/15 09:17	12/07/15 19:59	1
Terphenyl-d14 (Surr)	39		24 - 146	12/04/15 09:17	12/07/15 19:59	1

Method: 8082A - Polychlorinated Biphenyls (PCBs) by Gas Chromatography

Analyte	Result	Qualifier	PQL	MDL	Unit	D	Prepared	Analyzed	Dil Fac
PCB-1016	0.0025	U	0.018	0.0025	mg/Kg	☼	12/04/15 07:17	12/08/15 14:19	1
PCB-1221	0.0084	U	0.018	0.0084	mg/Kg	☼	12/04/15 07:17	12/08/15 14:19	1
PCB-1232	0.012	U	0.018	0.012	mg/Kg	☼	12/04/15 07:17	12/08/15 14:19	1
PCB-1242	0.0086	U	0.018	0.0086	mg/Kg	☼	12/04/15 07:17	12/08/15 14:19	1
PCB-1248	0.0035	U	0.018	0.0035	mg/Kg	☼	12/04/15 07:17	12/08/15 14:19	1
PCB-1254	0.0022	U	0.018	0.0022	mg/Kg	☼	12/04/15 07:17	12/08/15 14:19	1
PCB-1260	0.0013	U	0.018	0.0013	mg/Kg	☼	12/04/15 07:17	12/08/15 14:19	1

Surrogate	%Recovery	Qualifier	Limits	Prepared	Analyzed	Dil Fac
DCB Decachlorobiphenyl	80		26 - 129	12/04/15 07:17	12/08/15 14:19	1
Tetrachloro-m-xylene	80		31 - 122	12/04/15 07:17	12/08/15 14:19	1

Method: 6020 - Metals (ICP/MS)

Analyte	Result	Qualifier	PQL	MDL	Unit	D	Prepared	Analyzed	Dil Fac
Antimony	0.12	U	0.52	0.12	mg/Kg	☼	12/04/15 13:15	12/07/15 14:58	10
Arsenic	2.6		0.52	0.11	mg/Kg	☼	12/04/15 13:15	12/07/15 14:58	10
Cadmium	0.21	U	0.52	0.21	mg/Kg	☼	12/04/15 13:15	12/07/15 14:58	10
Chromium	11		0.52	0.20	mg/Kg	☼	12/04/15 13:15	12/07/15 14:58	10
Copper	2.5		1.0	0.42	mg/Kg	☼	12/04/15 13:15	12/07/15 14:58	10
Nickel	1.2		0.52	0.17	mg/Kg	☼	12/04/15 13:15	12/07/15 14:58	10
Selenium	0.061	I	0.52	0.050	mg/Kg	☼	12/04/15 13:15	12/07/15 14:58	10
Silver	0.020	U	0.10	0.020	mg/Kg	☼	12/04/15 13:15	12/07/15 14:58	10
Thallium	0.093	U	0.10	0.093	mg/Kg	☼	12/04/15 13:15	12/07/15 14:58	10
Zinc	5.1		4.2	2.1	mg/Kg	☼	12/04/15 13:15	12/07/15 14:58	10

Method: 6020 - Metals (ICP/MS) - RA

Analyte	Result	Qualifier	PQL	MDL	Unit	D	Prepared	Analyzed	Dil Fac
Beryllium	0.050	I	0.52	0.027	mg/Kg	☼	12/04/15 13:15	12/09/15 14:02	10
Lead	2.3		0.26	0.077	mg/Kg	☼	12/04/15 13:15	12/09/15 14:02	10

TestAmerica Pensacola

Client Sample Results

Client: Escambia County Water Quality Division
 Project/Site: Wedgewood Community Soil Monitoring Plan

TestAmerica Job ID: 400-114676-1
 SDG: Wedgewood Community Ballpark

Method: 7471A - Mercury (CVAA)

Analyte	Result	Qualifier	PQL	MDL	Unit	D	Prepared	Analyzed	Dil Fac
Mercury	0.0081	U	0.013	0.0081	mg/Kg	☼	12/04/15 12:08	12/06/15 17:17	1

General Chemistry

Analyte	Result	Qualifier	PQL	MDL	Unit	D	Prepared	Analyzed	Dil Fac
Percent Moisture	6.0		0.10	0.10	%			12/04/15 17:34	1

Client Sample ID: LEWIS POWELL PARK - SOUTH

Lab Sample ID: 400-114676-3

Date Collected: 12/03/15 11:40

Matrix: Solid

Date Received: 12/03/15 13:08

Percent Solids: 93.3

Method: 8270D - Semivolatile Organic Compounds (GC/MS)

Analyte	Result	Qualifier	PQL	MDL	Unit	D	Prepared	Analyzed	Dil Fac
Acenaphthene	0.035	U	0.35	0.035	mg/Kg	☼	12/04/15 09:17	12/07/15 20:37	1
Acenaphthylene	0.035	U	0.35	0.035	mg/Kg	☼	12/04/15 09:17	12/07/15 20:37	1
Anthracene	0.035	U	0.35	0.035	mg/Kg	☼	12/04/15 09:17	12/07/15 20:37	1
Benzidine	0.10	U	1.0	0.10	mg/Kg	☼	12/04/15 09:17	12/07/15 20:37	1
Benzo[a]anthracene	0.035	U	0.35	0.035	mg/Kg	☼	12/04/15 09:17	12/07/15 20:37	1
Benzo[a]pyrene	0.035	U	0.35	0.035	mg/Kg	☼	12/04/15 09:17	12/07/15 20:37	1
Benzo[b]fluoranthene	0.035	U J3	0.35	0.035	mg/Kg	☼	12/04/15 09:17	12/07/15 20:37	1
Benzo[g,h,i]perylene	0.035	U	0.35	0.035	mg/Kg	☼	12/04/15 09:17	12/07/15 20:37	1
Benzo[k]fluoranthene	0.035	U	0.35	0.035	mg/Kg	☼	12/04/15 09:17	12/07/15 20:37	1
Bis(2-chloroethoxy)methane	0.035	U	0.35	0.035	mg/Kg	☼	12/04/15 09:17	12/07/15 20:37	1
Bis(2-chloroethyl)ether	0.035	U	0.35	0.035	mg/Kg	☼	12/04/15 09:17	12/07/15 20:37	1
Bis(2-ethylhexyl) phthalate	0.035	U	0.35	0.035	mg/Kg	☼	12/04/15 09:17	12/07/15 20:37	1
Fluoranthene	0.035	U	0.35	0.035	mg/Kg	☼	12/04/15 09:17	12/07/15 20:37	1
Fluorene	0.035	U	0.35	0.035	mg/Kg	☼	12/04/15 09:17	12/07/15 20:37	1
Hexachlorobenzene	0.10	U	0.35	0.10	mg/Kg	☼	12/04/15 09:17	12/07/15 20:37	1
Hexachlorobutadiene	0.035	U	0.35	0.035	mg/Kg	☼	12/04/15 09:17	12/07/15 20:37	1
Hexachlorocyclopentadiene	0.069	U	0.35	0.069	mg/Kg	☼	12/04/15 09:17	12/07/15 20:37	1
Hexachloroethane	0.10	U	0.35	0.10	mg/Kg	☼	12/04/15 09:17	12/07/15 20:37	1
Indeno[1,2,3-cd]pyrene	0.035	U	0.35	0.035	mg/Kg	☼	12/04/15 09:17	12/07/15 20:37	1
Isophorone	0.035	U	0.35	0.035	mg/Kg	☼	12/04/15 09:17	12/07/15 20:37	1
Naphthalene	0.035	U	0.35	0.035	mg/Kg	☼	12/04/15 09:17	12/07/15 20:37	1
Nitrobenzene	0.035	U	0.35	0.035	mg/Kg	☼	12/04/15 09:17	12/07/15 20:37	1
Pyrene	0.035	U	0.35	0.035	mg/Kg	☼	12/04/15 09:17	12/07/15 20:37	1
Phenanthrene	0.035	U	0.35	0.035	mg/Kg	☼	12/04/15 09:17	12/07/15 20:37	1
Phenol	0.035	U	0.35	0.035	mg/Kg	☼	12/04/15 09:17	12/07/15 20:37	1
Pentachlorophenol	0.069	U	0.69	0.069	mg/Kg	☼	12/04/15 09:17	12/07/15 20:37	1
Chrysene	0.035	U	0.35	0.035	mg/Kg	☼	12/04/15 09:17	12/07/15 20:37	1
4-Bromophenyl phenyl ether	0.035	U	0.35	0.035	mg/Kg	☼	12/04/15 09:17	12/07/15 20:37	1
Butyl benzyl phthalate	0.035	U	0.35	0.035	mg/Kg	☼	12/04/15 09:17	12/07/15 20:37	1
4-Chloro-3-methylphenol	0.035	U	0.35	0.035	mg/Kg	☼	12/04/15 09:17	12/07/15 20:37	1
4-Chlorophenyl phenyl ether	0.035	U	0.35	0.035	mg/Kg	☼	12/04/15 09:17	12/07/15 20:37	1
4,6-Dinitro-2-methylphenol	0.035	U	0.35	0.035	mg/Kg	☼	12/04/15 09:17	12/07/15 20:37	1
4-Nitrophenol	0.12	U	0.35	0.12	mg/Kg	☼	12/04/15 09:17	12/07/15 20:37	1
2-Chloronaphthalene	0.035	U	0.35	0.035	mg/Kg	☼	12/04/15 09:17	12/07/15 20:37	1
2-Chlorophenol	0.035	U	0.35	0.035	mg/Kg	☼	12/04/15 09:17	12/07/15 20:37	1
3,3'-Dichlorobenzidine	0.035	U	0.35	0.035	mg/Kg	☼	12/04/15 09:17	12/07/15 20:37	1
1,2,4-Trichlorobenzene	0.035	U	0.35	0.035	mg/Kg	☼	12/04/15 09:17	12/07/15 20:37	1
2,4,6-Trichlorophenol	0.035	U	0.35	0.035	mg/Kg	☼	12/04/15 09:17	12/07/15 20:37	1
N-Nitrosodi-n-propylamine	0.12	U	0.35	0.12	mg/Kg	☼	12/04/15 09:17	12/07/15 20:37	1
N-Nitrosodimethylamine	0.069	U	0.35	0.069	mg/Kg	☼	12/04/15 09:17	12/07/15 20:37	1
N-Nitrosodiphenylamine	0.035	U	0.35	0.035	mg/Kg	☼	12/04/15 09:17	12/07/15 20:37	1
2-Nitrophenol	0.035	U	0.35	0.035	mg/Kg	☼	12/04/15 09:17	12/07/15 20:37	1

TestAmerica Pensacola

Client Sample Results

Client: Escambia County Water Quality Division
 Project/Site: Wedgewood Community Soil Monitoring Plan

TestAmerica Job ID: 400-114676-1
 SDG: Wedgewood Community Ballpark

Client Sample ID: LEWIS POWELL PARK - SOUTH

Lab Sample ID: 400-114676-3

Date Collected: 12/03/15 11:40

Matrix: Solid

Date Received: 12/03/15 13:08

Percent Solids: 93.3

Method: 8270D - Semivolatile Organic Compounds (GC/MS) (Continued)

Analyte	Result	Qualifier	PQL	MDL	Unit	D	Prepared	Analyzed	Dil Fac
Dibenz(a,h)anthracene	0.035	U	0.35	0.035	mg/Kg	☼	12/04/15 09:17	12/07/15 20:37	1
Di-n-butyl phthalate	0.035	U	0.35	0.035	mg/Kg	☼	12/04/15 09:17	12/07/15 20:37	1
2,4-Dichlorophenol	0.035	U	0.35	0.035	mg/Kg	☼	12/04/15 09:17	12/07/15 20:37	1
2,4-Dimethylphenol	0.035	U	0.35	0.035	mg/Kg	☼	12/04/15 09:17	12/07/15 20:37	1
2,4-Dinitrophenol	0.30	U	1.0	0.30	mg/Kg	☼	12/04/15 09:17	12/07/15 20:37	1
2,4-Dinitrotoluene	0.035	U	0.35	0.035	mg/Kg	☼	12/04/15 09:17	12/07/15 20:37	1
2,6-Dinitrotoluene	0.035	U	0.35	0.035	mg/Kg	☼	12/04/15 09:17	12/07/15 20:37	1
Di-n-octyl phthalate	0.035	U	0.35	0.035	mg/Kg	☼	12/04/15 09:17	12/07/15 20:37	1
Dimethyl phthalate	0.035	U	0.35	0.035	mg/Kg	☼	12/04/15 09:17	12/07/15 20:37	1
Diethyl phthalate	0.035	U	0.35	0.035	mg/Kg	☼	12/04/15 09:17	12/07/15 20:37	1
1,2-Dichlorobenzene	0.035	U	0.35	0.035	mg/Kg	☼	12/04/15 09:17	12/07/15 20:37	1
1,3-Dichlorobenzene	0.035	U	0.35	0.035	mg/Kg	☼	12/04/15 09:17	12/07/15 20:37	1
1,4-Dichlorobenzene	0.035	U	0.35	0.035	mg/Kg	☼	12/04/15 09:17	12/07/15 20:37	1
bis (2-chloroisopropyl) ether	0.035	U	0.35	0.035	mg/Kg	☼	12/04/15 09:17	12/07/15 20:37	1

Surrogate	%Recovery	Qualifier	Limits	Prepared	Analyzed	Dil Fac
2,4,6-Tribromophenol (Surr)	39		10 - 150	12/04/15 09:17	12/07/15 20:37	1
2-Fluorobiphenyl	42		27 - 127	12/04/15 09:17	12/07/15 20:37	1
2-Fluorophenol (Surr)	45		25 - 128	12/04/15 09:17	12/07/15 20:37	1
Nitrobenzene-d5 (Surr)	47		15 - 136	12/04/15 09:17	12/07/15 20:37	1
Phenol-d5 (Surr)	46		29 - 130	12/04/15 09:17	12/07/15 20:37	1
Terphenyl-d14 (Surr)	35		24 - 146	12/04/15 09:17	12/07/15 20:37	1

Method: 8082A - Polychlorinated Biphenyls (PCBs) by Gas Chromatography

Analyte	Result	Qualifier	PQL	MDL	Unit	D	Prepared	Analyzed	Dil Fac
PCB-1016	0.0026	U	0.018	0.0026	mg/Kg	☼	12/04/15 07:17	12/08/15 13:47	1
PCB-1221	0.0086	U	0.018	0.0086	mg/Kg	☼	12/04/15 07:17	12/08/15 13:47	1
PCB-1232	0.012	U	0.018	0.012	mg/Kg	☼	12/04/15 07:17	12/08/15 13:47	1
PCB-1242	0.0088	U	0.018	0.0088	mg/Kg	☼	12/04/15 07:17	12/08/15 13:47	1
PCB-1248	0.0035	U	0.018	0.0035	mg/Kg	☼	12/04/15 07:17	12/08/15 13:47	1
PCB-1254	0.0022	U	0.018	0.0022	mg/Kg	☼	12/04/15 07:17	12/08/15 13:47	1
PCB-1260	0.0013	U	0.018	0.0013	mg/Kg	☼	12/04/15 07:17	12/08/15 13:47	1

Surrogate	%Recovery	Qualifier	Limits	Prepared	Analyzed	Dil Fac
DCB Decachlorobiphenyl	59		26 - 129	12/04/15 07:17	12/08/15 13:47	1
Tetrachloro-m-xylene	70		31 - 122	12/04/15 07:17	12/08/15 13:47	1

Method: 6020 - Metals (ICP/MS)

Analyte	Result	Qualifier	PQL	MDL	Unit	D	Prepared	Analyzed	Dil Fac
Antimony	0.13	IV	0.50	0.12	mg/Kg	☼	12/04/15 13:15	12/07/15 15:02	10
Arsenic	3.6		0.50	0.11	mg/Kg	☼	12/04/15 13:15	12/07/15 15:02	10
Cadmium	0.20	U	0.50	0.20	mg/Kg	☼	12/04/15 13:15	12/07/15 15:02	10
Chromium	13		0.50	0.19	mg/Kg	☼	12/04/15 13:15	12/07/15 15:02	10
Copper	3.5		0.99	0.40	mg/Kg	☼	12/04/15 13:15	12/07/15 15:02	10
Nickel	1.4		0.50	0.16	mg/Kg	☼	12/04/15 13:15	12/07/15 15:02	10
Selenium	0.079	I	0.50	0.048	mg/Kg	☼	12/04/15 13:15	12/07/15 15:02	10
Silver	0.019	U	0.099	0.019	mg/Kg	☼	12/04/15 13:15	12/07/15 15:02	10
Thallium	0.089	U	0.099	0.089	mg/Kg	☼	12/04/15 13:15	12/07/15 15:02	10
Zinc	5.5		4.0	2.0	mg/Kg	☼	12/04/15 13:15	12/07/15 15:02	10

TestAmerica Pensacola

Client Sample Results

Client: Escambia County Water Quality Division
 Project/Site: Wedgewood Community Soil Monitoring Plan

TestAmerica Job ID: 400-114676-1
 SDG: Wedgewood Community Ballpark

Client Sample ID: LEWIS POWELL PARK - SOUTH

Lab Sample ID: 400-114676-3

Date Collected: 12/03/15 11:40

Matrix: Solid

Date Received: 12/03/15 13:08

Percent Solids: 93.3

Method: 6020 - Metals (ICP/MS) - RA

Analyte	Result	Qualifier	PQL	MDL	Unit	D	Prepared	Analyzed	Dil Fac
Beryllium	0.041	I	0.50	0.026	mg/Kg	☼	12/04/15 13:15	12/09/15 14:07	10
Lead	2.6		0.25	0.073	mg/Kg	☼	12/04/15 13:15	12/09/15 14:07	10

Method: 7471A - Mercury (CVAA)

Analyte	Result	Qualifier	PQL	MDL	Unit	D	Prepared	Analyzed	Dil Fac
Mercury	0.0083	U	0.014	0.0083	mg/Kg	☼	12/04/15 12:08	12/06/15 17:18	1

General Chemistry

Analyte	Result	Qualifier	PQL	MDL	Unit	D	Prepared	Analyzed	Dil Fac
Percent Moisture	6.7		0.10	0.10	%			12/04/15 17:34	1

Client Sample ID: WEDGEWOOD PAVILLION

Lab Sample ID: 400-114676-4

Date Collected: 12/03/15 12:15

Matrix: Solid

Date Received: 12/03/15 13:08

Percent Solids: 92.2

Method: 8270D - Semivolatile Organic Compounds (GC/MS)

Analyte	Result	Qualifier	PQL	MDL	Unit	D	Prepared	Analyzed	Dil Fac
Acenaphthene	0.036	U	0.36	0.036	mg/Kg	☼	12/04/15 09:17	12/07/15 21:15	1
Acenaphthylene	0.036	U	0.36	0.036	mg/Kg	☼	12/04/15 09:17	12/07/15 21:15	1
Anthracene	0.036	U	0.36	0.036	mg/Kg	☼	12/04/15 09:17	12/07/15 21:15	1
Benzidine	0.11	U	1.1	0.11	mg/Kg	☼	12/04/15 09:17	12/07/15 21:15	1
Benzo[a]anthracene	0.036	U	0.36	0.036	mg/Kg	☼	12/04/15 09:17	12/07/15 21:15	1
Benzo[a]pyrene	0.036	U	0.36	0.036	mg/Kg	☼	12/04/15 09:17	12/07/15 21:15	1
Benzo[b]fluoranthene	0.036	U J3	0.36	0.036	mg/Kg	☼	12/04/15 09:17	12/07/15 21:15	1
Benzo[g,h,i]perylene	0.036	U	0.36	0.036	mg/Kg	☼	12/04/15 09:17	12/07/15 21:15	1
Benzo[k]fluoranthene	0.036	U	0.36	0.036	mg/Kg	☼	12/04/15 09:17	12/07/15 21:15	1
Bis(2-chloroethoxy)methane	0.036	U	0.36	0.036	mg/Kg	☼	12/04/15 09:17	12/07/15 21:15	1
Bis(2-chloroethyl)ether	0.036	U	0.36	0.036	mg/Kg	☼	12/04/15 09:17	12/07/15 21:15	1
Bis(2-ethylhexyl) phthalate	0.036	U	0.36	0.036	mg/Kg	☼	12/04/15 09:17	12/07/15 21:15	1
Fluoranthene	0.036	U	0.36	0.036	mg/Kg	☼	12/04/15 09:17	12/07/15 21:15	1
Fluorene	0.036	U	0.36	0.036	mg/Kg	☼	12/04/15 09:17	12/07/15 21:15	1
Hexachlorobenzene	0.11	U	0.36	0.11	mg/Kg	☼	12/04/15 09:17	12/07/15 21:15	1
Hexachlorobutadiene	0.036	U	0.36	0.036	mg/Kg	☼	12/04/15 09:17	12/07/15 21:15	1
Hexachlorocyclopentadiene	0.071	U	0.36	0.071	mg/Kg	☼	12/04/15 09:17	12/07/15 21:15	1
Hexachloroethane	0.11	U	0.36	0.11	mg/Kg	☼	12/04/15 09:17	12/07/15 21:15	1
Indeno[1,2,3-cd]pyrene	0.036	U	0.36	0.036	mg/Kg	☼	12/04/15 09:17	12/07/15 21:15	1
Isophorone	0.036	U	0.36	0.036	mg/Kg	☼	12/04/15 09:17	12/07/15 21:15	1
Naphthalene	0.036	U	0.36	0.036	mg/Kg	☼	12/04/15 09:17	12/07/15 21:15	1
Nitrobenzene	0.036	U	0.36	0.036	mg/Kg	☼	12/04/15 09:17	12/07/15 21:15	1
Pyrene	0.036	U	0.36	0.036	mg/Kg	☼	12/04/15 09:17	12/07/15 21:15	1
Phenanthrene	0.036	U	0.36	0.036	mg/Kg	☼	12/04/15 09:17	12/07/15 21:15	1
Phenol	0.036	U	0.36	0.036	mg/Kg	☼	12/04/15 09:17	12/07/15 21:15	1
Pentachlorophenol	0.071	U	0.71	0.071	mg/Kg	☼	12/04/15 09:17	12/07/15 21:15	1
Chrysene	0.036	U	0.36	0.036	mg/Kg	☼	12/04/15 09:17	12/07/15 21:15	1
4-Bromophenyl phenyl ether	0.036	U	0.36	0.036	mg/Kg	☼	12/04/15 09:17	12/07/15 21:15	1
Butyl benzyl phthalate	0.036	U	0.36	0.036	mg/Kg	☼	12/04/15 09:17	12/07/15 21:15	1
4-Chloro-3-methylphenol	0.036	U	0.36	0.036	mg/Kg	☼	12/04/15 09:17	12/07/15 21:15	1
4-Chlorophenyl phenyl ether	0.036	U	0.36	0.036	mg/Kg	☼	12/04/15 09:17	12/07/15 21:15	1
4,6-Dinitro-2-methylphenol	0.036	U	0.36	0.036	mg/Kg	☼	12/04/15 09:17	12/07/15 21:15	1
4-Nitrophenol	0.12	U	0.36	0.12	mg/Kg	☼	12/04/15 09:17	12/07/15 21:15	1

TestAmerica Pensacola

Client Sample Results

Client: Escambia County Water Quality Division
 Project/Site: Wedgewood Community Soil Monitoring Plan

TestAmerica Job ID: 400-114676-1
 SDG: Wedgewood Community Ballpark

Client Sample ID: WEDGEWOOD PAVILLION

Lab Sample ID: 400-114676-4

Date Collected: 12/03/15 12:15

Matrix: Solid

Date Received: 12/03/15 13:08

Percent Solids: 92.2

Method: 8270D - Semivolatile Organic Compounds (GC/MS) (Continued)

Analyte	Result	Qualifier	PQL	MDL	Unit	D	Prepared	Analyzed	Dil Fac
2-Chloronaphthalene	0.036	U	0.36	0.036	mg/Kg	☼	12/04/15 09:17	12/07/15 21:15	1
2-Chlorophenol	0.036	U	0.36	0.036	mg/Kg	☼	12/04/15 09:17	12/07/15 21:15	1
3,3'-Dichlorobenzidine	0.036	U	0.36	0.036	mg/Kg	☼	12/04/15 09:17	12/07/15 21:15	1
1,2,4-Trichlorobenzene	0.036	U	0.36	0.036	mg/Kg	☼	12/04/15 09:17	12/07/15 21:15	1
2,4,6-Trichlorophenol	0.036	U	0.36	0.036	mg/Kg	☼	12/04/15 09:17	12/07/15 21:15	1
N-Nitrosodi-n-propylamine	0.12	U	0.36	0.12	mg/Kg	☼	12/04/15 09:17	12/07/15 21:15	1
N-Nitrosodimethylamine	0.071	U	0.36	0.071	mg/Kg	☼	12/04/15 09:17	12/07/15 21:15	1
N-Nitrosodiphenylamine	0.036	U	0.36	0.036	mg/Kg	☼	12/04/15 09:17	12/07/15 21:15	1
2-Nitrophenol	0.036	U	0.36	0.036	mg/Kg	☼	12/04/15 09:17	12/07/15 21:15	1
Dibenz(a,h)anthracene	0.036	U	0.36	0.036	mg/Kg	☼	12/04/15 09:17	12/07/15 21:15	1
Di-n-butyl phthalate	0.036	U	0.36	0.036	mg/Kg	☼	12/04/15 09:17	12/07/15 21:15	1
2,4-Dichlorophenol	0.036	U	0.36	0.036	mg/Kg	☼	12/04/15 09:17	12/07/15 21:15	1
2,4-Dimethylphenol	0.036	U	0.36	0.036	mg/Kg	☼	12/04/15 09:17	12/07/15 21:15	1
2,4-Dinitrophenol	0.31	U	1.1	0.31	mg/Kg	☼	12/04/15 09:17	12/07/15 21:15	1
2,4-Dinitrotoluene	0.036	U	0.36	0.036	mg/Kg	☼	12/04/15 09:17	12/07/15 21:15	1
2,6-Dinitrotoluene	0.036	U	0.36	0.036	mg/Kg	☼	12/04/15 09:17	12/07/15 21:15	1
Di-n-octyl phthalate	0.036	U	0.36	0.036	mg/Kg	☼	12/04/15 09:17	12/07/15 21:15	1
Dimethyl phthalate	0.036	U	0.36	0.036	mg/Kg	☼	12/04/15 09:17	12/07/15 21:15	1
Diethyl phthalate	0.036	U	0.36	0.036	mg/Kg	☼	12/04/15 09:17	12/07/15 21:15	1
1,2-Dichlorobenzene	0.036	U	0.36	0.036	mg/Kg	☼	12/04/15 09:17	12/07/15 21:15	1
1,3-Dichlorobenzene	0.036	U	0.36	0.036	mg/Kg	☼	12/04/15 09:17	12/07/15 21:15	1
1,4-Dichlorobenzene	0.036	U	0.36	0.036	mg/Kg	☼	12/04/15 09:17	12/07/15 21:15	1
bis (2-chloroisopropyl) ether	0.036	U	0.36	0.036	mg/Kg	☼	12/04/15 09:17	12/07/15 21:15	1

Surrogate	%Recovery	Qualifier	Limits	Prepared	Analyzed	Dil Fac
2,4,6-Tribromophenol (Surr)	40		10 - 150	12/04/15 09:17	12/07/15 21:15	1
2-Fluorobiphenyl	37		27 - 127	12/04/15 09:17	12/07/15 21:15	1
2-Fluorophenol (Surr)	45		25 - 128	12/04/15 09:17	12/07/15 21:15	1
Nitrobenzene-d5 (Surr)	48		15 - 136	12/04/15 09:17	12/07/15 21:15	1
Phenol-d5 (Surr)	45		29 - 130	12/04/15 09:17	12/07/15 21:15	1
Terphenyl-d14 (Surr)	31		24 - 146	12/04/15 09:17	12/07/15 21:15	1

Method: 8082A - Polychlorinated Biphenyls (PCBs) by Gas Chromatography

Analyte	Result	Qualifier	PQL	MDL	Unit	D	Prepared	Analyzed	Dil Fac
PCB-1016	0.0026	U	0.018	0.0026	mg/Kg	☼	12/04/15 07:17	12/08/15 13:14	1
PCB-1221	0.0086	U	0.018	0.0086	mg/Kg	☼	12/04/15 07:17	12/08/15 13:14	1
PCB-1232	0.012	U	0.018	0.012	mg/Kg	☼	12/04/15 07:17	12/08/15 13:14	1
PCB-1242	0.0088	U	0.018	0.0088	mg/Kg	☼	12/04/15 07:17	12/08/15 13:14	1
PCB-1248	0.0035	U	0.018	0.0035	mg/Kg	☼	12/04/15 07:17	12/08/15 13:14	1
PCB-1254	0.0023	U	0.018	0.0023	mg/Kg	☼	12/04/15 07:17	12/08/15 13:14	1
PCB-1260	0.0013	U	0.018	0.0013	mg/Kg	☼	12/04/15 07:17	12/08/15 13:14	1

Surrogate	%Recovery	Qualifier	Limits	Prepared	Analyzed	Dil Fac
DCB Decachlorobiphenyl	81		26 - 129	12/04/15 07:17	12/08/15 13:14	1
Tetrachloro-m-xylene	88		31 - 122	12/04/15 07:17	12/08/15 13:14	1

Method: 6020 - Metals (ICP/MS)

Analyte	Result	Qualifier	PQL	MDL	Unit	D	Prepared	Analyzed	Dil Fac
Antimony	0.12	U	0.52	0.12	mg/Kg	☼	12/04/15 13:15	12/07/15 15:07	10
Arsenic	0.75		0.52	0.11	mg/Kg	☼	12/04/15 13:15	12/07/15 15:07	10

TestAmerica Pensacola

Client Sample Results

Client: Escambia County Water Quality Division
 Project/Site: Wedgewood Community Soil Monitoring Plan

TestAmerica Job ID: 400-114676-1
 SDG: Wedgewood Community Ballpark

Client Sample ID: WEDGEWOOD PAVILLION

Lab Sample ID: 400-114676-4

Date Collected: 12/03/15 12:15

Matrix: Solid

Date Received: 12/03/15 13:08

Percent Solids: 92.2

Method: 6020 - Metals (ICP/MS) (Continued)

Analyte	Result	Qualifier	PQL	MDL	Unit	D	Prepared	Analyzed	Dil Fac
Cadmium	0.21	U	0.52	0.21	mg/Kg	☼	12/04/15 13:15	12/07/15 15:07	10
Chromium	3.1		0.52	0.20	mg/Kg	☼	12/04/15 13:15	12/07/15 15:07	10
Copper	2.2		1.0	0.41	mg/Kg	☼	12/04/15 13:15	12/07/15 15:07	10
Nickel	1.0		0.52	0.17	mg/Kg	☼	12/04/15 13:15	12/07/15 15:07	10
Selenium	0.076	I	0.52	0.050	mg/Kg	☼	12/04/15 13:15	12/07/15 15:07	10
Silver	0.020	U	0.10	0.020	mg/Kg	☼	12/04/15 13:15	12/07/15 15:07	10
Thallium	0.093	U	0.10	0.093	mg/Kg	☼	12/04/15 13:15	12/07/15 15:07	10
Zinc	7.4		4.1	2.1	mg/Kg	☼	12/04/15 13:15	12/07/15 15:07	10

Method: 6020 - Metals (ICP/MS) - RA

Analyte	Result	Qualifier	PQL	MDL	Unit	D	Prepared	Analyzed	Dil Fac
Beryllium	0.034	I	0.52	0.027	mg/Kg	☼	12/04/15 13:15	12/09/15 14:12	10
Lead	3.5		0.26	0.077	mg/Kg	☼	12/04/15 13:15	12/09/15 14:12	10

Method: 7471A - Mercury (CVAA)

Analyte	Result	Qualifier	PQL	MDL	Unit	D	Prepared	Analyzed	Dil Fac
Mercury	0.0084	U	0.014	0.0084	mg/Kg	☼	12/04/15 12:08	12/06/15 17:19	1

General Chemistry

Analyte	Result	Qualifier	PQL	MDL	Unit	D	Prepared	Analyzed	Dil Fac
Percent Moisture	7.8		0.10	0.10	%			12/04/15 17:34	1

Client Sample ID: WEDGEWOOD PLAYGROUND

Lab Sample ID: 400-114676-5

Date Collected: 12/03/15 12:35

Matrix: Solid

Date Received: 12/03/15 13:08

Percent Solids: 89.9

Method: 8270D - Semivolatile Organic Compounds (GC/MS)

Analyte	Result	Qualifier	PQL	MDL	Unit	D	Prepared	Analyzed	Dil Fac
Acenaphthene	0.036	U	0.36	0.036	mg/Kg	☼	12/04/15 09:17	12/07/15 21:53	1
Acenaphthylene	0.036	U	0.36	0.036	mg/Kg	☼	12/04/15 09:17	12/07/15 21:53	1
Anthracene	0.036	U	0.36	0.036	mg/Kg	☼	12/04/15 09:17	12/07/15 21:53	1
Benzidine	0.11	U	1.1	0.11	mg/Kg	☼	12/04/15 09:17	12/07/15 21:53	1
Benzo[a]anthracene	0.036	U	0.36	0.036	mg/Kg	☼	12/04/15 09:17	12/07/15 21:53	1
Benzo[a]pyrene	0.036	U	0.36	0.036	mg/Kg	☼	12/04/15 09:17	12/07/15 21:53	1
Benzo[b]fluoranthene	0.036	U J3	0.36	0.036	mg/Kg	☼	12/04/15 09:17	12/07/15 21:53	1
Benzo[g,h,i]perylene	0.036	U	0.36	0.036	mg/Kg	☼	12/04/15 09:17	12/07/15 21:53	1
Benzo[k]fluoranthene	0.036	U	0.36	0.036	mg/Kg	☼	12/04/15 09:17	12/07/15 21:53	1
Bis(2-chloroethoxy)methane	0.036	U	0.36	0.036	mg/Kg	☼	12/04/15 09:17	12/07/15 21:53	1
Bis(2-chloroethyl)ether	0.036	U	0.36	0.036	mg/Kg	☼	12/04/15 09:17	12/07/15 21:53	1
Bis(2-ethylhexyl) phthalate	0.040	I	0.36	0.036	mg/Kg	☼	12/04/15 09:17	12/07/15 21:53	1
Fluoranthene	0.036	U	0.36	0.036	mg/Kg	☼	12/04/15 09:17	12/07/15 21:53	1
Fluorene	0.036	U	0.36	0.036	mg/Kg	☼	12/04/15 09:17	12/07/15 21:53	1
Hexachlorobenzene	0.11	U	0.36	0.11	mg/Kg	☼	12/04/15 09:17	12/07/15 21:53	1
Hexachlorobutadiene	0.036	U	0.36	0.036	mg/Kg	☼	12/04/15 09:17	12/07/15 21:53	1
Hexachlorocyclopentadiene	0.073	U	0.36	0.073	mg/Kg	☼	12/04/15 09:17	12/07/15 21:53	1
Hexachloroethane	0.11	U	0.36	0.11	mg/Kg	☼	12/04/15 09:17	12/07/15 21:53	1
Indeno[1,2,3-cd]pyrene	0.036	U	0.36	0.036	mg/Kg	☼	12/04/15 09:17	12/07/15 21:53	1
Isophorone	0.036	U	0.36	0.036	mg/Kg	☼	12/04/15 09:17	12/07/15 21:53	1
Naphthalene	0.036	U	0.36	0.036	mg/Kg	☼	12/04/15 09:17	12/07/15 21:53	1
Nitrobenzene	0.036	U	0.36	0.036	mg/Kg	☼	12/04/15 09:17	12/07/15 21:53	1

TestAmerica Pensacola

Client Sample Results

Client: Escambia County Water Quality Division
 Project/Site: Wedgewood Community Soil Monitoring Plan

TestAmerica Job ID: 400-114676-1
 SDG: Wedgewood Community Ballpark

Client Sample ID: WEDGEWOOD PLAYGROUND

Lab Sample ID: 400-114676-5

Date Collected: 12/03/15 12:35

Matrix: Solid

Date Received: 12/03/15 13:08

Percent Solids: 89.9

Method: 8270D - Semivolatile Organic Compounds (GC/MS) (Continued)

Analyte	Result	Qualifier	PQL	MDL	Unit	D	Prepared	Analyzed	Dil Fac
Pyrene	0.036	U	0.36	0.036	mg/Kg	☼	12/04/15 09:17	12/07/15 21:53	1
Phenanthrene	0.036	U	0.36	0.036	mg/Kg	☼	12/04/15 09:17	12/07/15 21:53	1
Phenol	0.036	U	0.36	0.036	mg/Kg	☼	12/04/15 09:17	12/07/15 21:53	1
Pentachlorophenol	0.073	U	0.73	0.073	mg/Kg	☼	12/04/15 09:17	12/07/15 21:53	1
Chrysene	0.036	U	0.36	0.036	mg/Kg	☼	12/04/15 09:17	12/07/15 21:53	1
4-Bromophenyl phenyl ether	0.036	U	0.36	0.036	mg/Kg	☼	12/04/15 09:17	12/07/15 21:53	1
Butyl benzyl phthalate	0.036	U	0.36	0.036	mg/Kg	☼	12/04/15 09:17	12/07/15 21:53	1
4-Chloro-3-methylphenol	0.036	U	0.36	0.036	mg/Kg	☼	12/04/15 09:17	12/07/15 21:53	1
4-Chlorophenyl phenyl ether	0.036	U	0.36	0.036	mg/Kg	☼	12/04/15 09:17	12/07/15 21:53	1
4,6-Dinitro-2-methylphenol	0.036	U	0.36	0.036	mg/Kg	☼	12/04/15 09:17	12/07/15 21:53	1
4-Nitrophenol	0.12	U	0.36	0.12	mg/Kg	☼	12/04/15 09:17	12/07/15 21:53	1
2-Chloronaphthalene	0.036	U	0.36	0.036	mg/Kg	☼	12/04/15 09:17	12/07/15 21:53	1
2-Chlorophenol	0.036	U	0.36	0.036	mg/Kg	☼	12/04/15 09:17	12/07/15 21:53	1
3,3'-Dichlorobenzidine	0.036	U	0.36	0.036	mg/Kg	☼	12/04/15 09:17	12/07/15 21:53	1
1,2,4-Trichlorobenzene	0.036	U	0.36	0.036	mg/Kg	☼	12/04/15 09:17	12/07/15 21:53	1
2,4,6-Trichlorophenol	0.036	U	0.36	0.036	mg/Kg	☼	12/04/15 09:17	12/07/15 21:53	1
N-Nitrosodi-n-propylamine	0.12	U	0.36	0.12	mg/Kg	☼	12/04/15 09:17	12/07/15 21:53	1
N-Nitrosodimethylamine	0.073	U	0.36	0.073	mg/Kg	☼	12/04/15 09:17	12/07/15 21:53	1
N-Nitrosodiphenylamine	0.036	U	0.36	0.036	mg/Kg	☼	12/04/15 09:17	12/07/15 21:53	1
2-Nitrophenol	0.036	U	0.36	0.036	mg/Kg	☼	12/04/15 09:17	12/07/15 21:53	1
Dibenz(a,h)anthracene	0.036	U	0.36	0.036	mg/Kg	☼	12/04/15 09:17	12/07/15 21:53	1
Di-n-butyl phthalate	0.036	U	0.36	0.036	mg/Kg	☼	12/04/15 09:17	12/07/15 21:53	1
2,4-Dichlorophenol	0.036	U	0.36	0.036	mg/Kg	☼	12/04/15 09:17	12/07/15 21:53	1
2,4-Dimethylphenol	0.036	U	0.36	0.036	mg/Kg	☼	12/04/15 09:17	12/07/15 21:53	1
2,4-Dinitrophenol	0.32	U	1.1	0.32	mg/Kg	☼	12/04/15 09:17	12/07/15 21:53	1
2,4-Dinitrotoluene	0.036	U	0.36	0.036	mg/Kg	☼	12/04/15 09:17	12/07/15 21:53	1
2,6-Dinitrotoluene	0.036	U	0.36	0.036	mg/Kg	☼	12/04/15 09:17	12/07/15 21:53	1
Di-n-octyl phthalate	0.036	U	0.36	0.036	mg/Kg	☼	12/04/15 09:17	12/07/15 21:53	1
Dimethyl phthalate	0.036	U	0.36	0.036	mg/Kg	☼	12/04/15 09:17	12/07/15 21:53	1
Diethyl phthalate	0.036	U	0.36	0.036	mg/Kg	☼	12/04/15 09:17	12/07/15 21:53	1
1,2-Dichlorobenzene	0.036	U	0.36	0.036	mg/Kg	☼	12/04/15 09:17	12/07/15 21:53	1
1,3-Dichlorobenzene	0.036	U	0.36	0.036	mg/Kg	☼	12/04/15 09:17	12/07/15 21:53	1
1,4-Dichlorobenzene	0.036	U	0.36	0.036	mg/Kg	☼	12/04/15 09:17	12/07/15 21:53	1
bis (2-chloroisopropyl) ether	0.036	U	0.36	0.036	mg/Kg	☼	12/04/15 09:17	12/07/15 21:53	1

Surrogate	%Recovery	Qualifier	Limits	Prepared	Analyzed	Dil Fac
2,4,6-Tribromophenol (Surr)	39		10 - 150	12/04/15 09:17	12/07/15 21:53	1
2-Fluorobiphenyl	37		27 - 127	12/04/15 09:17	12/07/15 21:53	1
2-Fluorophenol (Surr)	44		25 - 128	12/04/15 09:17	12/07/15 21:53	1
Nitrobenzene-d5 (Surr)	47		15 - 136	12/04/15 09:17	12/07/15 21:53	1
Phenol-d5 (Surr)	45		29 - 130	12/04/15 09:17	12/07/15 21:53	1
Terphenyl-d14 (Surr)	31		24 - 146	12/04/15 09:17	12/07/15 21:53	1

Method: 8082A - Polychlorinated Biphenyls (PCBs) by Gas Chromatography

Analyte	Result	Qualifier	PQL	MDL	Unit	D	Prepared	Analyzed	Dil Fac
PCB-1016	0.0026	U	0.019	0.0026	mg/Kg	☼	12/04/15 07:17	12/08/15 12:42	1
PCB-1221	0.0088	U	0.019	0.0088	mg/Kg	☼	12/04/15 07:17	12/08/15 12:42	1
PCB-1232	0.012	U	0.019	0.012	mg/Kg	☼	12/04/15 07:17	12/08/15 12:42	1
PCB-1242	0.0090	U	0.019	0.0090	mg/Kg	☼	12/04/15 07:17	12/08/15 12:42	1
PCB-1248	0.0036	U	0.019	0.0036	mg/Kg	☼	12/04/15 07:17	12/08/15 12:42	1

TestAmerica Pensacola

Client Sample Results

Client: Escambia County Water Quality Division
 Project/Site: Wedgewood Community Soil Monitoring Plan

TestAmerica Job ID: 400-114676-1
 SDG: Wedgewood Community Ballpark

Client Sample ID: WEDGEWOOD PLAYGROUND

Lab Sample ID: 400-114676-5

Date Collected: 12/03/15 12:35

Matrix: Solid

Date Received: 12/03/15 13:08

Percent Solids: 89.9

Method: 8082A - Polychlorinated Biphenyls (PCBs) by Gas Chromatography (Continued)

Analyte	Result	Qualifier	PQL	MDL	Unit	D	Prepared	Analyzed	Dil Fac
PCB-1254	0.0023	U	0.019	0.0023	mg/Kg	☼	12/04/15 07:17	12/08/15 12:42	1
PCB-1260	0.0013	U	0.019	0.0013	mg/Kg	☼	12/04/15 07:17	12/08/15 12:42	1
Surrogate	%Recovery	Qualifier	Limits				Prepared	Analyzed	Dil Fac
DCB Decachlorobiphenyl	52		26 - 129				12/04/15 07:17	12/08/15 12:42	1
Tetrachloro-m-xylene	62		31 - 122				12/04/15 07:17	12/08/15 12:42	1

Method: 6020 - Metals (ICP/MS)

Analyte	Result	Qualifier	PQL	MDL	Unit	D	Prepared	Analyzed	Dil Fac
Antimony	0.18	I V	0.54	0.13	mg/Kg	☼	12/04/15 13:15	12/07/15 15:12	10
Arsenic	0.92		0.54	0.12	mg/Kg	☼	12/04/15 13:15	12/07/15 15:12	10
Cadmium	0.22	U	0.54	0.22	mg/Kg	☼	12/04/15 13:15	12/07/15 15:12	10
Chromium	3.6		0.54	0.21	mg/Kg	☼	12/04/15 13:15	12/07/15 15:12	10
Copper	3.8		1.1	0.43	mg/Kg	☼	12/04/15 13:15	12/07/15 15:12	10
Nickel	1.3		0.54	0.17	mg/Kg	☼	12/04/15 13:15	12/07/15 15:12	10
Selenium	0.11	I	0.54	0.052	mg/Kg	☼	12/04/15 13:15	12/07/15 15:12	10
Silver	0.021	U	0.11	0.021	mg/Kg	☼	12/04/15 13:15	12/07/15 15:12	10
Thallium	0.097	U	0.11	0.097	mg/Kg	☼	12/04/15 13:15	12/07/15 15:12	10
Zinc	15		4.3	2.2	mg/Kg	☼	12/04/15 13:15	12/07/15 15:12	10

Method: 6020 - Metals (ICP/MS) - RA

Analyte	Result	Qualifier	PQL	MDL	Unit	D	Prepared	Analyzed	Dil Fac
Beryllium	0.028	U	0.54	0.028	mg/Kg	☼	12/04/15 13:15	12/09/15 14:16	10
Lead	5.1		0.27	0.080	mg/Kg	☼	12/04/15 13:15	12/09/15 14:16	10

Method: 7471A - Mercury (CVAA)

Analyte	Result	Qualifier	PQL	MDL	Unit	D	Prepared	Analyzed	Dil Fac
Mercury	0.012	I	0.015	0.0088	mg/Kg	☼	12/04/15 12:08	12/06/15 17:24	1

General Chemistry

Analyte	Result	Qualifier	PQL	MDL	Unit	D	Prepared	Analyzed	Dil Fac
Percent Moisture	10		0.10	0.10	%			12/04/15 17:34	1

Definitions/Glossary

Client: Escambia County Water Quality Division
Project/Site: Wedgewood Community Soil Monitoring Plan

TestAmerica Job ID: 400-114676-1
SDG: Wedgewood Community Ballpark

Qualifiers

GC/MS Semi VOA

Qualifier	Qualifier Description
U	Indicates that the compound was analyzed for but not detected.
J3	Estimated value; value may not be accurate. Spike recovery or RPD outside of criteria.
I	The reported value is between the laboratory method detection limit and the laboratory practical quantitation limit.

GC Semi VOA

Qualifier	Qualifier Description
U	Indicates that the compound was analyzed for but not detected.
J3	Estimated value; value may not be accurate. Spike recovery or RPD outside of criteria.

Metals

Qualifier	Qualifier Description
U	Indicates that the compound was analyzed for but not detected.
I	The reported value is between the laboratory method detection limit and the laboratory practical quantitation limit.
V	Indicates that the analyte was detected at or above the method detection limit in both the sample and the associated method blank and the value of 10 times the blank value was equal to or greater than the associated sample value.
J3	Estimated value; value may not be accurate. Spike recovery or RPD outside of criteria.

Glossary

Abbreviation	These commonly used abbreviations may or may not be present in this report.
α	Listed under the "D" column to designate that the result is reported on a dry weight basis
%R	Percent Recovery
CFL	Contains Free Liquid
CNF	Contains no Free Liquid
DER	Duplicate error ratio (normalized absolute difference)
Dil Fac	Dilution Factor
DL, RA, RE, IN	Indicates a Dilution, Re-analysis, Re-extraction, or additional Initial metals/anion analysis of the sample
DLC	Decision level concentration
MDA	Minimum detectable activity
EDL	Estimated Detection Limit
MDC	Minimum detectable concentration
MDL	Method Detection Limit
ML	Minimum Level (Dioxin)
NC	Not Calculated
ND	Not detected at the reporting limit (or MDL or EDL if shown)
PQL	Practical Quantitation Limit
QC	Quality Control
RER	Relative error ratio
RL	Reporting Limit or Requested Limit (Radiochemistry)
RPD	Relative Percent Difference, a measure of the relative difference between two points
TEF	Toxicity Equivalent Factor (Dioxin)
TEQ	Toxicity Equivalent Quotient (Dioxin)

Method Summary

Client: Escambia County Water Quality Division
Project/Site: Wedgewood Community Soil Monitoring Plan

TestAmerica Job ID: 400-114676-1
SDG: Wedgewood Community Ballpark

Method	Method Description	Protocol	Laboratory
8270D	Semivolatile Organic Compounds (GC/MS)	SW846	TAL PEN
8082A	Polychlorinated Biphenyls (PCBs) by Gas Chromatography	SW846	TAL PEN
6020	Metals (ICP/MS)	SW846	TAL PEN
7471A	Mercury (CVAA)	SW846	TAL PEN
Moisture	Percent Moisture	EPA	TAL PEN
Local Method	Asbestos	NONE	

Protocol References:

EPA = US Environmental Protection Agency

NONE = NONE

SW846 = "Test Methods For Evaluating Solid Waste, Physical/Chemical Methods", Third Edition, November 1986 And Its Updates.

Laboratory References:

= EMLab P&K - Denver, 4955 Yarrow Street, Arvada, CO 80002

TAL PEN = TestAmerica Pensacola, 3355 McLemore Drive, Pensacola, FL 32514, TEL (850)474-1001

Lab Chronicle

Client: Escambia County Water Quality Division
 Project/Site: Wedgewood Community Soil Monitoring Plan

TestAmerica Job ID: 400-114676-1
 SDG: Wedgewood Community Ballpark

Client Sample ID: SWSC
Date Collected: 12/03/15 10:20
Date Received: 12/03/15 13:08

Lab Sample ID: 400-114676-1
Matrix: Solid

Prep Type	Batch Type	Batch Method	Run	Dil Factor	Initial Amount	Final Amount	Batch Number	Prepared or Analyzed	Analyst	Lab
Total/NA	Analysis	Moisture		1			286070	12/04/15 17:34	LEC	TAL PEN

Client Sample ID: SWSC
Date Collected: 12/03/15 10:20
Date Received: 12/03/15 13:08

Lab Sample ID: 400-114676-1
Matrix: Solid
Percent Solids: 92.2

Prep Type	Batch Type	Batch Method	Run	Dil Factor	Initial Amount	Final Amount	Batch Number	Prepared or Analyzed	Analyst	Lab
Total/NA	Prep	3546			15.07 g	1.0 mL	285957	12/04/15 09:17	RDT	TAL PEN
Total/NA	Analysis	8270D		1	15.07 g	1.0 mL	286022	12/07/15 19:21	TJB	TAL PEN
Total/NA	Prep	3546			15.23 g	5.0 mL	285915	12/04/15 07:17	RDT	TAL PEN
Total/NA	Analysis	8082A		1	15.23 g	5.0 mL	286367	12/08/15 14:51	MAM	TAL PEN
Total/NA	Prep	3050B			0.5009 g	50 mL	286003	12/04/15 13:15	RJB	TAL PEN
Total/NA	Analysis	6020		10	0.5009 g	50 mL	286243	12/07/15 14:53	RJB	TAL PEN
Total/NA	Prep	3050B	RA		0.5009 g	50 mL	286003	12/04/15 13:15	RJB	TAL PEN
Total/NA	Analysis	6020	RA	10	0.5009 g	50 mL	286636	12/09/15 13:58	RJB	TAL PEN
Total/NA	Prep	7471A			0.6334 g	40 mL	285955	12/04/15 12:08	JAP	TAL PEN
Total/NA	Analysis	7471A		1	0.6334 g	40 mL	286141	12/06/15 17:11	DN1	TAL PEN

Client Sample ID: LEWIS POWELL PARK - NORTH
Date Collected: 12/03/15 11:15
Date Received: 12/03/15 13:08

Lab Sample ID: 400-114676-2
Matrix: Solid

Prep Type	Batch Type	Batch Method	Run	Dil Factor	Initial Amount	Final Amount	Batch Number	Prepared or Analyzed	Analyst	Lab
Total/NA	Analysis	Moisture		1			286070	12/04/15 17:34	LEC	TAL PEN

Client Sample ID: LEWIS POWELL PARK - NORTH
Date Collected: 12/03/15 11:15
Date Received: 12/03/15 13:08

Lab Sample ID: 400-114676-2
Matrix: Solid
Percent Solids: 94.0

Prep Type	Batch Type	Batch Method	Run	Dil Factor	Initial Amount	Final Amount	Batch Number	Prepared or Analyzed	Analyst	Lab
Total/NA	Prep	3546			15.22 g	1.0 mL	285957	12/04/15 09:17	RDT	TAL PEN
Total/NA	Analysis	8270D		1	15.22 g	1.0 mL	286022	12/07/15 19:59	TJB	TAL PEN
Total/NA	Prep	3546			15.14 g	5.0 mL	285915	12/04/15 07:17	RDT	TAL PEN
Total/NA	Analysis	8082A		1	15.14 g	5.0 mL	286367	12/08/15 14:19	MAM	TAL PEN
Total/NA	Prep	3050B			0.5124 g	50 mL	286003	12/04/15 13:15	RJB	TAL PEN
Total/NA	Analysis	6020		10	0.5124 g	50 mL	286243	12/07/15 14:58	RJB	TAL PEN
Total/NA	Prep	3050B	RA		0.5124 g	50 mL	286003	12/04/15 13:15	RJB	TAL PEN
Total/NA	Analysis	6020	RA	10	0.5124 g	50 mL	286636	12/09/15 14:02	RJB	TAL PEN
Total/NA	Prep	7471A			0.6294 g	40 mL	285955	12/04/15 12:08	JAP	TAL PEN
Total/NA	Analysis	7471A		1	0.6294 g	40 mL	286141	12/06/15 17:17	DN1	TAL PEN

Lab Chronicle

Client: Escambia County Water Quality Division
 Project/Site: Wedgewood Community Soil Monitoring Plan

TestAmerica Job ID: 400-114676-1
 SDG: Wedgewood Community Ballpark

Client Sample ID: LEWIS POWELL PARK - SOUTH

Lab Sample ID: 400-114676-3

Date Collected: 12/03/15 11:40

Matrix: Solid

Date Received: 12/03/15 13:08

Prep Type	Batch Type	Batch Method	Run	Dil Factor	Initial Amount	Final Amount	Batch Number	Prepared or Analyzed	Analyst	Lab
Total/NA	Analysis	Moisture		1			286070	12/04/15 17:34	LEC	TAL PEN

Client Sample ID: LEWIS POWELL PARK - SOUTH

Lab Sample ID: 400-114676-3

Date Collected: 12/03/15 11:40

Matrix: Solid

Date Received: 12/03/15 13:08

Percent Solids: 93.3

Prep Type	Batch Type	Batch Method	Run	Dil Factor	Initial Amount	Final Amount	Batch Number	Prepared or Analyzed	Analyst	Lab
Total/NA	Prep	3546			15.32 g	1.0 mL	285957	12/04/15 09:17	RDT	TAL PEN
Total/NA	Analysis	8270D		1	15.32 g	1.0 mL	286022	12/07/15 20:37	TJB	TAL PEN
Total/NA	Prep	3546			15.03 g	5.0 mL	285915	12/04/15 07:17	RDT	TAL PEN
Total/NA	Analysis	8082A		1	15.03 g	5.0 mL	286367	12/08/15 13:47	MAM	TAL PEN
Total/NA	Prep	3050B	RA		0.5403 g	50 mL	286003	12/04/15 13:15	RJB	TAL PEN
Total/NA	Analysis	6020		10	0.5403 g	50 mL	286243	12/07/15 15:02	RJB	TAL PEN
Total/NA	Prep	3050B	RA		0.5403 g	50 mL	286003	12/04/15 13:15	RJB	TAL PEN
Total/NA	Analysis	6020	RA	10	0.5403 g	50 mL	286636	12/09/15 14:07	RJB	TAL PEN
Total/NA	Prep	7471A			0.6182 g	40 mL	285955	12/04/15 12:08	JAP	TAL PEN
Total/NA	Analysis	7471A		1	0.6182 g	40 mL	286141	12/06/15 17:18	DN1	TAL PEN

Client Sample ID: WEDGEWOOD PAVILLION

Lab Sample ID: 400-114676-4

Date Collected: 12/03/15 12:15

Matrix: Solid

Date Received: 12/03/15 13:08

Prep Type	Batch Type	Batch Method	Run	Dil Factor	Initial Amount	Final Amount	Batch Number	Prepared or Analyzed	Analyst	Lab
Total/NA	Analysis	Moisture		1			286070	12/04/15 17:34	LEC	TAL PEN

Client Sample ID: WEDGEWOOD PAVILLION

Lab Sample ID: 400-114676-4

Date Collected: 12/03/15 12:15

Matrix: Solid

Date Received: 12/03/15 13:08

Percent Solids: 92.2

Prep Type	Batch Type	Batch Method	Run	Dil Factor	Initial Amount	Final Amount	Batch Number	Prepared or Analyzed	Analyst	Lab
Total/NA	Prep	3546			15.11 g	1.0 mL	285957	12/04/15 09:17	RDT	TAL PEN
Total/NA	Analysis	8270D		1	15.11 g	1.0 mL	286022	12/07/15 21:15	TJB	TAL PEN
Total/NA	Prep	3546			15.15 g	5.0 mL	285915	12/04/15 07:17	RDT	TAL PEN
Total/NA	Analysis	8082A		1	15.15 g	5.0 mL	286367	12/08/15 13:14	MAM	TAL PEN
Total/NA	Prep	3050B	RA		0.5236 g	50 mL	286003	12/04/15 13:15	RJB	TAL PEN
Total/NA	Analysis	6020		10	0.5236 g	50 mL	286243	12/07/15 15:07	RJB	TAL PEN
Total/NA	Prep	3050B	RA		0.5236 g	50 mL	286003	12/04/15 13:15	RJB	TAL PEN
Total/NA	Analysis	6020	RA	10	0.5236 g	50 mL	286636	12/09/15 14:12	RJB	TAL PEN
Total/NA	Prep	7471A			0.6234 g	40 mL	285955	12/04/15 12:08	JAP	TAL PEN
Total/NA	Analysis	7471A		1	0.6234 g	40 mL	286141	12/06/15 17:19	DN1	TAL PEN

Lab Chronicle

Client: Escambia County Water Quality Division
 Project/Site: Wedgewood Community Soil Monitoring Plan

TestAmerica Job ID: 400-114676-1
 SDG: Wedgewood Community Ballpark

Client Sample ID: WEDGEWOOD PLAYGROUND

Lab Sample ID: 400-114676-5

Date Collected: 12/03/15 12:35

Matrix: Solid

Date Received: 12/03/15 13:08

Prep Type	Batch Type	Batch Method	Run	Dil Factor	Initial Amount	Final Amount	Batch Number	Prepared or Analyzed	Analyst	Lab
Total/NA	Analysis	Moisture		1			286070	12/04/15 17:34	LEC	TAL PEN

Client Sample ID: WEDGEWOOD PLAYGROUND

Lab Sample ID: 400-114676-5

Date Collected: 12/03/15 12:35

Matrix: Solid

Date Received: 12/03/15 13:08

Percent Solids: 89.9

Prep Type	Batch Type	Batch Method	Run	Dil Factor	Initial Amount	Final Amount	Batch Number	Prepared or Analyzed	Analyst	Lab
Total/NA	Prep	3546			15.10 g	1.0 mL	285957	12/04/15 09:17	RDT	TAL PEN
Total/NA	Analysis	8270D		1	15.10 g	1.0 mL	286022	12/07/15 21:53	TJB	TAL PEN
Total/NA	Prep	3546			15.17 g	5.0 mL	285915	12/04/15 07:17	RDT	TAL PEN
Total/NA	Analysis	8082A		1	15.17 g	5.0 mL	286367	12/08/15 12:42	MAM	TAL PEN
Total/NA	Prep	3050B			0.5135 g	50 mL	286003	12/04/15 13:15	RJB	TAL PEN
Total/NA	Analysis	6020		10	0.5135 g	50 mL	286243	12/07/15 15:12	RJB	TAL PEN
Total/NA	Prep	3050B	RA		0.5135 g	50 mL	286003	12/04/15 13:15	RJB	TAL PEN
Total/NA	Analysis	6020	RA	10	0.5135 g	50 mL	286636	12/09/15 14:16	RJB	TAL PEN
Total/NA	Prep	7471A			0.6059 g	40 mL	285955	12/04/15 12:08	JAP	TAL PEN
Total/NA	Analysis	7471A		1	0.6059 g	40 mL	286141	12/06/15 17:24	DN1	TAL PEN

Client Sample ID: Lab Control Sample

Lab Sample ID: LCS 400-285915/8-A

Date Collected: N/A

Matrix: Solid

Date Received: N/A

Prep Type	Batch Type	Batch Method	Run	Dil Factor	Initial Amount	Final Amount	Batch Number	Prepared or Analyzed	Analyst	Lab
Total/NA	Prep	3546			15.00 g	5.0 mL	285915	12/04/15 07:17	RDT	TAL PEN
Total/NA	Analysis	8082A		1	15.00 g	5.0 mL	286367	12/08/15 11:05	MAM	TAL PEN

Client Sample ID: Lab Control Sample

Lab Sample ID: LCS 400-285955/15-A

Date Collected: N/A

Matrix: Solid

Date Received: N/A

Prep Type	Batch Type	Batch Method	Run	Dil Factor	Initial Amount	Final Amount	Batch Number	Prepared or Analyzed	Analyst	Lab
Total/NA	Prep	7471A			0.6036 g	40 mL	285955	12/04/15 09:14	JAP	TAL PEN
Total/NA	Analysis	7471A		1	0.6036 g	40 mL	286141	12/06/15 17:09	DN1	TAL PEN

Client Sample ID: Lab Control Sample

Lab Sample ID: LCS 400-285957/9-A

Date Collected: N/A

Matrix: Solid

Date Received: N/A

Prep Type	Batch Type	Batch Method	Run	Dil Factor	Initial Amount	Final Amount	Batch Number	Prepared or Analyzed	Analyst	Lab
Total/NA	Prep	3546			15.00 g	1.0 mL	285957	12/04/15 09:17	RDT	TAL PEN
Total/NA	Analysis	8270D		1	15.00 g	1.0 mL	286912	12/11/15 22:53	AJR	TAL PEN

Lab Chronicle

Client: Escambia County Water Quality Division
 Project/Site: Wedgewood Community Soil Monitoring Plan

TestAmerica Job ID: 400-114676-1
 SDG: Wedgewood Community Ballpark

Client Sample ID: Lab Control Sample

Lab Sample ID: LCS 400-286003/2-A ^10

Date Collected: N/A

Matrix: Solid

Date Received: N/A

Prep Type	Batch Type	Batch Method	Run	Dil Factor	Initial Amount	Final Amount	Batch Number	Prepared or Analyzed	Analyst	Lab
Total/NA	Prep	3050B	RA		0.5117 g	50 mL	286003	12/04/15 13:15	RJB	TAL PEN
Total/NA	Analysis	6020	RA	10	0.5117 g	50 mL	286636	12/09/15 13:53	RJB	TAL PEN

Client Sample ID: Lab Control Sample

Lab Sample ID: LCS 400-286003/2-A ^5

Date Collected: N/A

Matrix: Solid

Date Received: N/A

Prep Type	Batch Type	Batch Method	Run	Dil Factor	Initial Amount	Final Amount	Batch Number	Prepared or Analyzed	Analyst	Lab
Total/NA	Prep	3050B			0.5117 g	50 mL	286003	12/04/15 13:15	RJB	TAL PEN
Total/NA	Analysis	6020		5	0.5117 g	50 mL	286243	12/07/15 14:49	RJB	TAL PEN

Client Sample ID: Method Blank

Lab Sample ID: MB 400-285915/9-A

Date Collected: N/A

Matrix: Solid

Date Received: N/A

Prep Type	Batch Type	Batch Method	Run	Dil Factor	Initial Amount	Final Amount	Batch Number	Prepared or Analyzed	Analyst	Lab
Total/NA	Prep	3546			15.00 g	5.0 mL	285915	12/04/15 07:17	RDT	TAL PEN
Total/NA	Analysis	8082A		1	15.00 g	5.0 mL	286367	12/08/15 10:33	MAM	TAL PEN

Client Sample ID: Method Blank

Lab Sample ID: MB 400-285955/14-A

Date Collected: N/A

Matrix: Solid

Date Received: N/A

Prep Type	Batch Type	Batch Method	Run	Dil Factor	Initial Amount	Final Amount	Batch Number	Prepared or Analyzed	Analyst	Lab
Total/NA	Prep	7471A			0.6076 g	40 mL	285955	12/04/15 09:14	JAP	TAL PEN
Total/NA	Analysis	7471A		1	0.6076 g	40 mL	286141	12/06/15 17:08	DN1	TAL PEN

Client Sample ID: Method Blank

Lab Sample ID: MB 400-286003/1-A ^10

Date Collected: N/A

Matrix: Solid

Date Received: N/A

Prep Type	Batch Type	Batch Method	Run	Dil Factor	Initial Amount	Final Amount	Batch Number	Prepared or Analyzed	Analyst	Lab
Total/NA	Prep	3050B			0.5302 g	50 mL	286003	12/04/15 13:15	RJB	TAL PEN
Total/NA	Analysis	6020		10	0.5302 g	50 mL	286243	12/07/15 14:44	RJB	TAL PEN

Client Sample ID: SWSC

Lab Sample ID: 400-114676-1 MS

Date Collected: 12/03/15 10:20

Matrix: Solid

Date Received: 12/03/15 13:08

Percent Solids: 92.2

Prep Type	Batch Type	Batch Method	Run	Dil Factor	Initial Amount	Final Amount	Batch Number	Prepared or Analyzed	Analyst	Lab
Total/NA	Prep	7471A			0.6236 g	40 mL	285955	12/04/15 12:08	JAP	TAL PEN
Total/NA	Analysis	7471A		1	0.6236 g	40 mL	286141	12/06/15 17:14	DN1	TAL PEN

Lab Chronicle

Client: Escambia County Water Quality Division
 Project/Site: Wedgewood Community Soil Monitoring Plan

TestAmerica Job ID: 400-114676-1
 SDG: Wedgewood Community Ballpark

Client Sample ID: WEDGEWOOD PLAYGROUND

Lab Sample ID: 400-114676-5 MS

Date Collected: 12/03/15 12:35

Matrix: Solid

Date Received: 12/03/15 13:08

Percent Solids: 89.9

Prep Type	Batch Type	Batch Method	Run	Dil Factor	Initial Amount	Final Amount	Batch Number	Prepared or Analyzed	Analyst	Lab
Total/NA	Prep	3546			15.45 g	5.0 mL	285915	12/04/15 07:17	RDT	TAL PEN
Total/NA	Analysis	8082A		1	15.45 g	5.0 mL	286367	12/08/15 11:38	MAM	TAL PEN
Total/NA	Prep	3050B			0.5219 g	50 mL	286003	12/04/15 13:15	RJB	TAL PEN
Total/NA	Analysis	6020		10	0.5219 g	50 mL	286243	12/07/15 15:16	RJB	TAL PEN

Client Sample ID: SWSC

Lab Sample ID: 400-114676-1 MSD

Date Collected: 12/03/15 10:20

Matrix: Solid

Date Received: 12/03/15 13:08

Percent Solids: 92.2

Prep Type	Batch Type	Batch Method	Run	Dil Factor	Initial Amount	Final Amount	Batch Number	Prepared or Analyzed	Analyst	Lab
Total/NA	Prep	7471A			0.6291 g	40 mL	285955	12/04/15 12:08	JAP	TAL PEN
Total/NA	Analysis	7471A		1	0.6291 g	40 mL	286141	12/06/15 17:15	DN1	TAL PEN

Client Sample ID: WEDGEWOOD PLAYGROUND

Lab Sample ID: 400-114676-5 MSD

Date Collected: 12/03/15 12:35

Matrix: Solid

Date Received: 12/03/15 13:08

Percent Solids: 89.9

Prep Type	Batch Type	Batch Method	Run	Dil Factor	Initial Amount	Final Amount	Batch Number	Prepared or Analyzed	Analyst	Lab
Total/NA	Prep	3546			15.42 g	5.0 mL	285915	12/04/15 07:17	RDT	TAL PEN
Total/NA	Analysis	8082A		1	15.42 g	5.0 mL	286367	12/08/15 12:10	MAM	TAL PEN
Total/NA	Prep	3050B			0.5342 g	50 mL	286003	12/04/15 13:15	RJB	TAL PEN
Total/NA	Analysis	6020		10	0.5342 g	50 mL	286243	12/07/15 15:21	RJB	TAL PEN

Laboratory References:

= EMLab P&K - Denver, 4955 Yarrow Street, Arvada, CO 80002

TAL PEN = TestAmerica Pensacola, 3355 McLemore Drive, Pensacola, FL 32514, TEL (850)474-1001

QC Association Summary

Client: Escambia County Water Quality Division
 Project/Site: Wedgewood Community Soil Monitoring Plan

TestAmerica Job ID: 400-114676-1
 SDG: Wedgewood Community Ballpark

GC/MS Semi VOA

Prep Batch: 285957

Lab Sample ID	Client Sample ID	Prep Type	Matrix	Method	Prep Batch
400-114676-1	SWSC	Total/NA	Solid	3546	
400-114676-2	LEWIS POWELL PARK - NORTH	Total/NA	Solid	3546	
400-114676-3	LEWIS POWELL PARK - SOUTH	Total/NA	Solid	3546	
400-114676-4	WEDGEWOOD PAVILLION	Total/NA	Solid	3546	
400-114676-5	WEDGEWOOD PLAYGROUND	Total/NA	Solid	3546	
LCS 400-285957/9-A	Lab Control Sample	Total/NA	Solid	3546	

Analysis Batch: 286022

Lab Sample ID	Client Sample ID	Prep Type	Matrix	Method	Prep Batch
400-114676-1	SWSC	Total/NA	Solid	8270D	285957
400-114676-2	LEWIS POWELL PARK - NORTH	Total/NA	Solid	8270D	285957
400-114676-3	LEWIS POWELL PARK - SOUTH	Total/NA	Solid	8270D	285957
400-114676-4	WEDGEWOOD PAVILLION	Total/NA	Solid	8270D	285957
400-114676-5	WEDGEWOOD PLAYGROUND	Total/NA	Solid	8270D	285957

Analysis Batch: 286912

Lab Sample ID	Client Sample ID	Prep Type	Matrix	Method	Prep Batch
LCS 400-285957/9-A	Lab Control Sample	Total/NA	Solid	8270D	285957

GC Semi VOA

Prep Batch: 285915

Lab Sample ID	Client Sample ID	Prep Type	Matrix	Method	Prep Batch
400-114676-1	SWSC	Total/NA	Solid	3546	
400-114676-2	LEWIS POWELL PARK - NORTH	Total/NA	Solid	3546	
400-114676-3	LEWIS POWELL PARK - SOUTH	Total/NA	Solid	3546	
400-114676-4	WEDGEWOOD PAVILLION	Total/NA	Solid	3546	
400-114676-5	WEDGEWOOD PLAYGROUND	Total/NA	Solid	3546	
400-114676-5 MS	WEDGEWOOD PLAYGROUND	Total/NA	Solid	3546	
400-114676-5 MSD	WEDGEWOOD PLAYGROUND	Total/NA	Solid	3546	
LCS 400-285915/8-A	Lab Control Sample	Total/NA	Solid	3546	
MB 400-285915/9-A	Method Blank	Total/NA	Solid	3546	

Analysis Batch: 286367

Lab Sample ID	Client Sample ID	Prep Type	Matrix	Method	Prep Batch
400-114676-1	SWSC	Total/NA	Solid	8082A	285915
400-114676-2	LEWIS POWELL PARK - NORTH	Total/NA	Solid	8082A	285915
400-114676-3	LEWIS POWELL PARK - SOUTH	Total/NA	Solid	8082A	285915
400-114676-4	WEDGEWOOD PAVILLION	Total/NA	Solid	8082A	285915
400-114676-5	WEDGEWOOD PLAYGROUND	Total/NA	Solid	8082A	285915
400-114676-5 MS	WEDGEWOOD PLAYGROUND	Total/NA	Solid	8082A	285915
400-114676-5 MSD	WEDGEWOOD PLAYGROUND	Total/NA	Solid	8082A	285915
LCS 400-285915/8-A	Lab Control Sample	Total/NA	Solid	8082A	285915
MB 400-285915/9-A	Method Blank	Total/NA	Solid	8082A	285915

Metals

Prep Batch: 285955

Lab Sample ID	Client Sample ID	Prep Type	Matrix	Method	Prep Batch
400-114676-1	SWSC	Total/NA	Solid	7471A	

TestAmerica Pensacola

QC Association Summary

Client: Escambia County Water Quality Division
 Project/Site: Wedgewood Community Soil Monitoring Plan

TestAmerica Job ID: 400-114676-1
 SDG: Wedgewood Community Ballpark

Metals (Continued)

Prep Batch: 285955 (Continued)

Lab Sample ID	Client Sample ID	Prep Type	Matrix	Method	Prep Batch
400-114676-1 MS	SWSC	Total/NA	Solid	7471A	
400-114676-1 MSD	SWSC	Total/NA	Solid	7471A	
400-114676-2	LEWIS POWELL PARK - NORTH	Total/NA	Solid	7471A	
400-114676-3	LEWIS POWELL PARK - SOUTH	Total/NA	Solid	7471A	
400-114676-4	WEDGEWOOD PAVILLION	Total/NA	Solid	7471A	
400-114676-5	WEDGEWOOD PLAYGROUND	Total/NA	Solid	7471A	
LCS 400-285955/15-A	Lab Control Sample	Total/NA	Solid	7471A	
MB 400-285955/14-A	Method Blank	Total/NA	Solid	7471A	

Prep Batch: 286003

Lab Sample ID	Client Sample ID	Prep Type	Matrix	Method	Prep Batch
400-114676-1 - RA	SWSC	Total/NA	Solid	3050B	
400-114676-1	SWSC	Total/NA	Solid	3050B	
400-114676-2 - RA	LEWIS POWELL PARK - NORTH	Total/NA	Solid	3050B	
400-114676-2	LEWIS POWELL PARK - NORTH	Total/NA	Solid	3050B	
400-114676-3	LEWIS POWELL PARK - SOUTH	Total/NA	Solid	3050B	
400-114676-3 - RA	LEWIS POWELL PARK - SOUTH	Total/NA	Solid	3050B	
400-114676-4	WEDGEWOOD PAVILLION	Total/NA	Solid	3050B	
400-114676-4 - RA	WEDGEWOOD PAVILLION	Total/NA	Solid	3050B	
400-114676-5 - RA	WEDGEWOOD PLAYGROUND	Total/NA	Solid	3050B	
400-114676-5	WEDGEWOOD PLAYGROUND	Total/NA	Solid	3050B	
400-114676-5 MS	WEDGEWOOD PLAYGROUND	Total/NA	Solid	3050B	
400-114676-5 MSD	WEDGEWOOD PLAYGROUND	Total/NA	Solid	3050B	
LCS 400-286003/2-A ^10 - R	Lab Control Sample	Total/NA	Solid	3050B	
LCS 400-286003/2-A ^5	Lab Control Sample	Total/NA	Solid	3050B	
MB 400-286003/1-A ^10	Method Blank	Total/NA	Solid	3050B	

Analysis Batch: 286141

Lab Sample ID	Client Sample ID	Prep Type	Matrix	Method	Prep Batch
400-114676-1	SWSC	Total/NA	Solid	7471A	285955
400-114676-1 MS	SWSC	Total/NA	Solid	7471A	285955
400-114676-1 MSD	SWSC	Total/NA	Solid	7471A	285955
400-114676-2	LEWIS POWELL PARK - NORTH	Total/NA	Solid	7471A	285955
400-114676-3	LEWIS POWELL PARK - SOUTH	Total/NA	Solid	7471A	285955
400-114676-4	WEDGEWOOD PAVILLION	Total/NA	Solid	7471A	285955
400-114676-5	WEDGEWOOD PLAYGROUND	Total/NA	Solid	7471A	285955
LCS 400-285955/15-A	Lab Control Sample	Total/NA	Solid	7471A	285955
MB 400-285955/14-A	Method Blank	Total/NA	Solid	7471A	285955

Analysis Batch: 286243

Lab Sample ID	Client Sample ID	Prep Type	Matrix	Method	Prep Batch
400-114676-1	SWSC	Total/NA	Solid	6020	286003
400-114676-2	LEWIS POWELL PARK - NORTH	Total/NA	Solid	6020	286003
400-114676-3	LEWIS POWELL PARK - SOUTH	Total/NA	Solid	6020	286003
400-114676-4	WEDGEWOOD PAVILLION	Total/NA	Solid	6020	286003
400-114676-5	WEDGEWOOD PLAYGROUND	Total/NA	Solid	6020	286003
400-114676-5 MS	WEDGEWOOD PLAYGROUND	Total/NA	Solid	6020	286003
400-114676-5 MSD	WEDGEWOOD PLAYGROUND	Total/NA	Solid	6020	286003
LCS 400-286003/2-A ^5	Lab Control Sample	Total/NA	Solid	6020	286003
MB 400-286003/1-A ^10	Method Blank	Total/NA	Solid	6020	286003

TestAmerica Pensacola

QC Association Summary

Client: Escambia County Water Quality Division
Project/Site: Wedgewood Community Soil Monitoring Plan

TestAmerica Job ID: 400-114676-1
SDG: Wedgewood Community Ballpark

Metals (Continued)

Analysis Batch: 286636

Lab Sample ID	Client Sample ID	Prep Type	Matrix	Method	Prep Batch
400-114676-1 - RA	SWSC	Total/NA	Solid	6020	286003
400-114676-2 - RA	LEWIS POWELL PARK - NORTH	Total/NA	Solid	6020	286003
400-114676-3 - RA	LEWIS POWELL PARK - SOUTH	Total/NA	Solid	6020	286003
400-114676-4 - RA	WEDGEWOOD PAVILLION	Total/NA	Solid	6020	286003
400-114676-5 - RA	WEDGEWOOD PLAYGROUND	Total/NA	Solid	6020	286003
LCS 400-286003/2-A ^10 - R	Lab Control Sample	Total/NA	Solid	6020	286003

General Chemistry

Analysis Batch: 286070

Lab Sample ID	Client Sample ID	Prep Type	Matrix	Method	Prep Batch
400-114676-1	SWSC	Total/NA	Solid	Moisture	
400-114676-2	LEWIS POWELL PARK - NORTH	Total/NA	Solid	Moisture	
400-114676-3	LEWIS POWELL PARK - SOUTH	Total/NA	Solid	Moisture	
400-114676-4	WEDGEWOOD PAVILLION	Total/NA	Solid	Moisture	
400-114676-5	WEDGEWOOD PLAYGROUND	Total/NA	Solid	Moisture	

QC Sample Results

Client: Escambia County Water Quality Division
 Project/Site: Wedgewood Community Soil Monitoring Plan

TestAmerica Job ID: 400-114676-1
 SDG: Wedgewood Community Ballpark

Method: 8270D - Semivolatile Organic Compounds (GC/MS)

Lab Sample ID: LCS 400-285957/9-A
 Matrix: Solid
 Analysis Batch: 286912

Client Sample ID: Lab Control Sample
 Prep Type: Total/NA
 Prep Batch: 285957

Analyte	Spike Added	LCS Result	LCS Qualifier	Unit	D	%Rec	Limits
Acenaphthene	1.67	1.29		mg/Kg		77	59 - 130
Acenaphthylene	1.67	1.37		mg/Kg		82	60 - 130
Anthracene	1.67	1.39		mg/Kg		84	64 - 130
Benzidine	8.50	3.24		mg/Kg		38	10 - 150
Benzo[a]anthracene	1.67	1.41		mg/Kg		85	64 - 130
Benzo[a]pyrene	1.67	1.47		mg/Kg		88	56 - 130
Benzo[b]fluoranthene	1.67	3.55	J3	mg/Kg		213	62 - 130
Benzo[g,h,i]perylene	1.67	1.17		mg/Kg		70	39 - 132
Benzo[k]fluoranthene	1.67	1.45		mg/Kg		87	60 - 130
Bis(2-chloroethoxy)methane	1.67	1.27		mg/Kg		76	47 - 130
Bis(2-chloroethyl)ether	1.67	1.15		mg/Kg		69	37 - 130
Bis(2-ethylhexyl) phthalate	1.67	1.37		mg/Kg		82	62 - 140
Fluoranthene	1.67	1.57		mg/Kg		94	61 - 130
Fluorene	1.67	1.30		mg/Kg		78	59 - 130
Hexachlorobenzene	1.67	1.47		mg/Kg		88	44 - 136
Hexachlorobutadiene	1.67	1.16		mg/Kg		69	44 - 130
Hexachlorocyclopentadiene	1.67	0.666		mg/Kg		40	1 - 150
Hexachloroethane	1.67	1.18		mg/Kg		71	44 - 130
Indeno[1,2,3-cd]pyrene	1.67	1.27		mg/Kg		76	43 - 131
Isophorone	1.67	1.28		mg/Kg		77	48 - 130
Naphthalene	1.67	1.09		mg/Kg		65	45 - 130
Nitrobenzene	1.67	1.18		mg/Kg		71	49 - 130
Pyrene	1.67	1.46		mg/Kg		88	47 - 135
Phenanthrene	1.67	1.39		mg/Kg		83	63 - 130
Phenol	1.67	1.25		mg/Kg		75	43 - 130
Pentachlorophenol	3.33	2.76		mg/Kg		83	10 - 150
Chrysene	1.67	1.41		mg/Kg		85	65 - 130
4-Bromophenyl phenyl ether	1.67	1.41		mg/Kg		85	45 - 134
Butyl benzyl phthalate	1.67	1.41		mg/Kg		85	57 - 139
4-Chloro-3-methylphenol	1.67	1.37		mg/Kg		82	30 - 150
4-Chlorophenyl phenyl ether	1.67	1.38		mg/Kg		83	58 - 130
4,6-Dinitro-2-methylphenol	3.33	2.84		mg/Kg		85	10 - 142
4-Nitrophenol	3.33	3.06		mg/Kg		92	10 - 150
2-Chloronaphthalene	1.67	1.27		mg/Kg		76	60 - 130
2-Chlorophenol	1.67	1.29		mg/Kg		77	57 - 130
1,2,4-Trichlorobenzene	1.67	1.15		mg/Kg		69	50 - 112
2,4,6-Trichlorophenol	1.67	1.37		mg/Kg		82	57 - 130
N-Nitrosodi-n-propylamine	1.67	1.32		mg/Kg		79	44 - 130
N-Nitrosodimethylamine	1.67	1.11		mg/Kg		66	14 - 146
N-Nitrosodiphenylamine	5.68	4.56		mg/Kg		80	49 - 148
2-Nitrophenol	1.67	1.26		mg/Kg		76	54 - 130
Dibenz(a,h)anthracene	1.67	1.34		mg/Kg		81	43 - 133
Di-n-butyl phthalate	1.67	1.42		mg/Kg		85	62 - 131
2,4-Dichlorophenol	1.67	1.41		mg/Kg		85	56 - 130
2,4-Dimethylphenol	1.67	1.35		mg/Kg		81	43 - 130
2,4-Dinitrophenol	5.01	3.36		mg/Kg		67	10 - 130
2,4-Dinitrotoluene	1.67	1.41		mg/Kg		85	56 - 130
2,6-Dinitrotoluene	1.67	1.40		mg/Kg		84	65 - 130

TestAmerica Pensacola

QC Sample Results

Client: Escambia County Water Quality Division
 Project/Site: Wedgewood Community Soil Monitoring Plan

TestAmerica Job ID: 400-114676-1
 SDG: Wedgewood Community Ballpark

Method: 8270D - Semivolatile Organic Compounds (GC/MS) (Continued)

Lab Sample ID: LCS 400-285957/9-A
Matrix: Solid
Analysis Batch: 286912

Client Sample ID: Lab Control Sample
Prep Type: Total/NA
Prep Batch: 285957

Analyte	Spike Added	LCS Result	LCS Qualifier	Unit	D	%Rec	Limits
Di-n-octyl phthalate	1.67	1.47		mg/Kg		88	57 - 140
Dimethyl phthalate	1.67	1.37		mg/Kg		82	65 - 130
Diethyl phthalate	1.67	1.48		mg/Kg		89	63 - 130
1,2-Dichlorobenzene	1.67	1.24		mg/Kg		74	53 - 104
1,3-Dichlorobenzene	1.67	1.20		mg/Kg		72	55 - 101
1,4-Dichlorobenzene	1.67	1.22		mg/Kg		73	56 - 130
bis (2-chloroisopropyl) ether	1.67	1.08		mg/Kg		65	14 - 149

Surrogate	LCS %Recovery	LCS Qualifier	Limits
2,4,6-Tribromophenol (Surr)	92		10 - 150
2-Fluorobiphenyl	77		27 - 127
2-Fluorophenol (Surr)	74		25 - 128
Nitrobenzene-d5 (Surr)	71		15 - 136
Phenol-d5 (Surr)	78		29 - 130
Terphenyl-d14 (Surr)	88		24 - 146

Method: 8082A - Polychlorinated Biphenyls (PCBs) by Gas Chromatography

Lab Sample ID: MB 400-285915/9-A
Matrix: Solid
Analysis Batch: 286367

Client Sample ID: Method Blank
Prep Type: Total/NA
Prep Batch: 285915

Analyte	MB Result	MB Qualifier	PQL	MDL	Unit	D	Prepared	Analyzed	Dil Fac
PCB-1016	0.0024	U	0.017	0.0024	mg/Kg		12/04/15 07:17	12/08/15 10:33	1
PCB-1221	0.0080	U	0.017	0.0080	mg/Kg		12/04/15 07:17	12/08/15 10:33	1
PCB-1232	0.011	U	0.017	0.011	mg/Kg		12/04/15 07:17	12/08/15 10:33	1
PCB-1242	0.0082	U	0.017	0.0082	mg/Kg		12/04/15 07:17	12/08/15 10:33	1
PCB-1248	0.0033	U	0.017	0.0033	mg/Kg		12/04/15 07:17	12/08/15 10:33	1
PCB-1254	0.0021	U	0.017	0.0021	mg/Kg		12/04/15 07:17	12/08/15 10:33	1
PCB-1260	0.0012	U	0.017	0.0012	mg/Kg		12/04/15 07:17	12/08/15 10:33	1

Surrogate	MB %Recovery	MB Qualifier	Limits	Prepared	Analyzed	Dil Fac
DCB Decachlorobiphenyl	84		26 - 129	12/04/15 07:17	12/08/15 10:33	1
Tetrachloro-m-xylene	85		31 - 122	12/04/15 07:17	12/08/15 10:33	1

Lab Sample ID: LCS 400-285915/8-A
Matrix: Solid
Analysis Batch: 286367

Client Sample ID: Lab Control Sample
Prep Type: Total/NA
Prep Batch: 285915

Analyte	Spike Added	LCS Result	LCS Qualifier	Unit	D	%Rec	Limits
PCB-1016	0.333	0.225		mg/Kg		68	60 - 140
PCB-1260	0.333	0.242		mg/Kg		72	60 - 140

Surrogate	LCS %Recovery	LCS Qualifier	Limits
DCB Decachlorobiphenyl	78		26 - 129
Tetrachloro-m-xylene	75		31 - 122

TestAmerica Pensacola

QC Sample Results

Client: Escambia County Water Quality Division
 Project/Site: Wedgewood Community Soil Monitoring Plan

TestAmerica Job ID: 400-114676-1
 SDG: Wedgewood Community Ballpark

Method: 8082A - Polychlorinated Biphenyls (PCBs) by Gas Chromatography (Continued)

Lab Sample ID: 400-114676-5 MS

Matrix: Solid
Analysis Batch: 286367

Client Sample ID: WEDGEWOOD PLAYGROUND

Prep Type: Total/NA
Prep Batch: 285915

Analyte	Sample	Sample	Spike	MS MS		Unit	D	%Rec	Limits
	Result	Qualifier		Result	Qualifier				
PCB-1016	0.0026	U	0.360	0.178	J3	mg/Kg	☼	49	60 - 140
PCB-1260	0.0013	U	0.360	0.164	J3	mg/Kg	☼	45	60 - 140
MS MS									
Surrogate	%Recovery	Qualifier	Limits						
DCB Decachlorobiphenyl	47		26 - 129						
Tetrachloro-m-xylene	60		31 - 122						

Lab Sample ID: 400-114676-5 MSD

Matrix: Solid
Analysis Batch: 286367

Client Sample ID: WEDGEWOOD PLAYGROUND

Prep Type: Total/NA
Prep Batch: 285915

Analyte	Sample	Sample	Spike	MSD MSD		Unit	D	%Rec	Limits	RPD	Limit
	Result	Qualifier		Result	Qualifier						
PCB-1016	0.0026	U	0.361	0.231		mg/Kg	☼	64	60 - 140	26	30
PCB-1260	0.0013	U	0.361	0.232	J3	mg/Kg	☼	64	60 - 140	35	30
MSD MSD											
Surrogate	%Recovery	Qualifier	Limits								
DCB Decachlorobiphenyl	68		26 - 129								
Tetrachloro-m-xylene	76		31 - 122								

Method: 6020 - Metals (ICP/MS)

Lab Sample ID: MB 400-286003/1-A ^10

Matrix: Solid
Analysis Batch: 286243

Client Sample ID: Method Blank

Prep Type: Total/NA
Prep Batch: 286003

Analyte	MB MB		PQL	MDL	Unit	D	Prepared	Analyzed	Dil Fac
	Result	Qualifier							
Antimony	0.114	I	0.47	0.11	mg/Kg		12/04/15 13:15	12/07/15 14:44	10
Arsenic	0.10	U	0.47	0.10	mg/Kg		12/04/15 13:15	12/07/15 14:44	10
Beryllium	0.025	U	0.47	0.025	mg/Kg		12/04/15 13:15	12/07/15 14:44	10
Cadmium	0.19	U	0.47	0.19	mg/Kg		12/04/15 13:15	12/07/15 14:44	10
Chromium	0.18	U	0.47	0.18	mg/Kg		12/04/15 13:15	12/07/15 14:44	10
Copper	0.38	U	0.94	0.38	mg/Kg		12/04/15 13:15	12/07/15 14:44	10
Lead	0.070	U	0.24	0.070	mg/Kg		12/04/15 13:15	12/07/15 14:44	10
Nickel	0.15	U	0.47	0.15	mg/Kg		12/04/15 13:15	12/07/15 14:44	10
Selenium	0.045	U	0.47	0.045	mg/Kg		12/04/15 13:15	12/07/15 14:44	10
Silver	0.018	U	0.094	0.018	mg/Kg		12/04/15 13:15	12/07/15 14:44	10
Thallium	0.085	U	0.094	0.085	mg/Kg		12/04/15 13:15	12/07/15 14:44	10
Zinc	1.9	U	3.8	1.9	mg/Kg		12/04/15 13:15	12/07/15 14:44	10

Lab Sample ID: LCS 400-286003/2-A ^5

Matrix: Solid
Analysis Batch: 286243

Client Sample ID: Lab Control Sample

Prep Type: Total/NA
Prep Batch: 286003

Analyte	Spike	LCS LCS		Unit	D	%Rec	Limits
		Result	Qualifier				
Antimony	4.89	5.01		mg/Kg		103	80 - 120
Arsenic	4.89	5.04		mg/Kg		103	80 - 120
Cadmium	4.89	5.15		mg/Kg		105	80 - 120

TestAmerica Pensacola

QC Sample Results

Client: Escambia County Water Quality Division
 Project/Site: Wedgewood Community Soil Monitoring Plan

TestAmerica Job ID: 400-114676-1
 SDG: Wedgewood Community Ballpark

Method: 6020 - Metals (ICP/MS) (Continued)

Lab Sample ID: LCS 400-286003/2-A ^5
Matrix: Solid
Analysis Batch: 286243

Client Sample ID: Lab Control Sample
Prep Type: Total/NA
Prep Batch: 286003

Analyte	Spike Added	LCS Result	LCS Qualifier	Unit	D	%Rec	Limits
Chromium	4.89	5.03		mg/Kg		103	80 - 120
Copper	4.89	5.02		mg/Kg		103	80 - 120
Nickel	4.89	5.01		mg/Kg		103	80 - 120
Selenium	4.89	4.97		mg/Kg		102	80 - 120
Silver	4.89	5.05		mg/Kg		103	80 - 120
Thallium	0.977	1.16		mg/Kg		119	80 - 120
Zinc	4.89	5.37		mg/Kg		110	80 - 120

Lab Sample ID: 400-114676-5 MS
Matrix: Solid
Analysis Batch: 286243

Client Sample ID: WEDGEWOOD PLAYGROUND
Prep Type: Total/NA
Prep Batch: 286003

Analyte	Sample Result	Sample Qualifier	Spike Added	MS Result	MS Qualifier	Unit	D	%Rec	Limits
Antimony	0.18	I V	5.33	4.60		mg/Kg	☼	83	75 - 125
Arsenic	0.92		5.33	5.95		mg/Kg	☼	94	75 - 125
Beryllium	0.031	I J3	5.33	5.63		mg/Kg	☼	105	75 - 125
Cadmium	0.22	U	5.33	5.47		mg/Kg	☼	103	75 - 125
Chromium	3.6		5.33	8.85		mg/Kg	☼	98	75 - 125
Copper	3.8		5.33	8.91		mg/Kg	☼	96	75 - 125
Lead	4.8	J3	5.33	9.86		mg/Kg	☼	95	75 - 125
Nickel	1.3		5.33	6.92		mg/Kg	☼	105	75 - 125
Selenium	0.11	I	5.33	5.01		mg/Kg	☼	92	75 - 125
Silver	0.021	U	5.33	5.46		mg/Kg	☼	102	75 - 125
Thallium	0.097	U	1.07	1.04		mg/Kg	☼	97	75 - 125
Zinc	15		5.33	20.5		mg/Kg	☼	105	75 - 125

Lab Sample ID: 400-114676-5 MSD
Matrix: Solid
Analysis Batch: 286243

Client Sample ID: WEDGEWOOD PLAYGROUND
Prep Type: Total/NA
Prep Batch: 286003

Analyte	Sample Result	Sample Qualifier	Spike Added	MSD Result	MSD Qualifier	Unit	D	%Rec	Limits	RPD	Limit
Antimony	0.18	I V	5.21	4.41		mg/Kg	☼	81	75 - 125	4	20
Arsenic	0.92		5.21	5.99		mg/Kg	☼	98	75 - 125	1	20
Beryllium	0.031	I J3	5.21	5.27		mg/Kg	☼	101	75 - 125	7	20
Cadmium	0.22	U	5.21	5.36		mg/Kg	☼	103	75 - 125	2	20
Chromium	3.6		5.21	9.29		mg/Kg	☼	109	75 - 125	5	20
Copper	3.8		5.21	9.23		mg/Kg	☼	104	75 - 125	3	20
Lead	4.8	J3	5.21	9.65		mg/Kg	☼	93	75 - 125	2	20
Nickel	1.3		5.21	6.88		mg/Kg	☼	106	75 - 125	1	20
Selenium	0.11	I	5.21	4.89		mg/Kg	☼	92	75 - 125	2	20
Silver	0.021	U	5.21	5.39		mg/Kg	☼	103	75 - 125	1	20
Thallium	0.097	U	1.04	0.970		mg/Kg	☼	93	75 - 125	7	20
Zinc	15		5.21	22.1	J3	mg/Kg	☼	138	75 - 125	7	20

QC Sample Results

Client: Escambia County Water Quality Division
 Project/Site: Wedgewood Community Soil Monitoring Plan

TestAmerica Job ID: 400-114676-1
 SDG: Wedgewood Community Ballpark

Method: 6020 - Metals (ICP/MS) - RA

Lab Sample ID: LCS 400-286003/2-A ^10
 Matrix: Solid
 Analysis Batch: 286636

Client Sample ID: Lab Control Sample
 Prep Type: Total/NA
 Prep Batch: 286003

Analyte	Spike Added	LCS Result	LCS Qualifier	Unit	D	%Rec	Limits
Beryllium - RA	4.89	5.27		mg/Kg		108	80 - 120
Lead - RA	4.89	5.13		mg/Kg		105	80 - 120

Method: 7471A - Mercury (CVAA)

Lab Sample ID: MB 400-285955/14-A
 Matrix: Solid
 Analysis Batch: 286141

Client Sample ID: Method Blank
 Prep Type: Total/NA
 Prep Batch: 285955

Analyte	MB Result	MB Qualifier	PQL	MDL	Unit	D	Prepared	Analyzed	Dil Fac
Mercury	0.0079	U	0.013	0.0079	mg/Kg		12/04/15 09:14	12/06/15 17:08	1

Lab Sample ID: LCS 400-285955/15-A
 Matrix: Solid
 Analysis Batch: 286141

Client Sample ID: Lab Control Sample
 Prep Type: Total/NA
 Prep Batch: 285955

Analyte	Spike Added	LCS Result	LCS Qualifier	Unit	D	%Rec	Limits
Mercury	0.0667	0.0652		mg/Kg		98	80 - 120

Lab Sample ID: 400-114676-1 MS
 Matrix: Solid
 Analysis Batch: 286141

Client Sample ID: SWSC
 Prep Type: Total/NA
 Prep Batch: 285955

Analyte	Sample Result	Sample Qualifier	Spike Added	MS Result	MS Qualifier	Unit	D	%Rec	Limits
Mercury	0.0082	U	0.140	0.145		mg/Kg	☼	104	80 - 120

Lab Sample ID: 400-114676-1 MSD
 Matrix: Solid
 Analysis Batch: 286141

Client Sample ID: SWSC
 Prep Type: Total/NA
 Prep Batch: 285955

Analyte	Sample Result	Sample Qualifier	Spike Added	MSD Result	MSD Qualifier	Unit	D	%Rec	Limits	RPD	Limit
Mercury	0.0082	U	0.139	0.140		mg/Kg	☼	101	80 - 120	4	20

Chain of Custody Record

Client Information		Lab Piv: Hooper, Carolyn D	Carrier Tracking No(s):	COC No: 400-44614-21616.2
Client Contact: Mr. Dana Morton		E-Mail: carolyn.hooper@testamericainc.com		Page: Page 1 of 1
Company: Escambia County Water Quality Division				Job #:
Address: 3363 West Park Place				
City: Pensacola				
State, Zip: FL, 32505				
Phone:				
Email: dmorton@co.escambia.fl.us				
Project Name: WEDGEWOOD COMMUNITY SOIL MONITORING PLAN				
Site: WEDGEWOOD COMMUNITY BALLPARK				
Due Date Requested:				
TAT Requested (days):				
PO #:				
WO #:				
Project #:				
SSOW#:				
Analysis Requested		Total Number of Containers		
Field Filtered Sample (Yes or No)		400-114676 COC		
Perform MS/MSD (Yes or No)		ASBESTOS		
SVOCs, 8270, PCBs, 8082, METALS, 6020/7471				
Matrix (W=water, S=soil, O=wastewater)				
Sample Type (C=comp, G=grab)				
Sample Time				
Sample Date				
Sample Identification				
SNRCL				
Lewis Powell Park - North				
Lewis Powell Park - South				
Wedgewood Pavilion				
Wedgewood Playground				
Special Instructions/Note:				
Preservation Codes:		M - Hexane N - None O - AsNaO2 P - Na2O4S Q - Na2SO3 R - Na2S2O3 S - H2SO4 T - TSP Dodecahydrate U - Acetone V - MCAA W - pH 4-5 X - EDTA Y - EDA Z - other (specify)		
Other:				
Possible Hazard Identification		Sample Disposal (A fee may be assessed if samples are retained longer than 1 month)		
<input type="checkbox"/> Non-Hazard <input type="checkbox"/> Flammable <input type="checkbox"/> Skin Irritant <input type="checkbox"/> Poison B <input type="checkbox"/> Unknown <input type="checkbox"/> Radiological		<input type="checkbox"/> Return To Client <input type="checkbox"/> Disposal By Lab <input type="checkbox"/> Archive For Months		
Deliverable Requested: I, II, III, IV, Other (specify)		Special Instructions/QC Requirements:		
Empty Kit Relinquished by:		Time:		
Relinquished by: <i>Michelle A Janga</i>		Date: 12-3-2015/1308		
Relinquished by:		Company: <i>ESQWAM</i>		
Relinquished by:		Date/Time: 12/3/15 1308		
Relinquished by:		Date/Time:		
Relinquished by:		Date/Time:		
Custody Seals Intact Δ Yes Δ No		Cooler Temperature(s) °C and Other Remarks: 3.5°C <i>IR 5</i>		



Login Sample Receipt Checklist

Client: Escambia County Water Quality Division

Job Number: 400-114676-1
SDG Number: Wedgewood Community Ballpark

Login Number: 114676

List Number: 1

Creator: Crawford, Lauren E

List Source: TestAmerica Pensacola

Question	Answer	Comment
Radioactivity wasn't checked or is <=/ background as measured by a survey meter.	N/A	
The cooler's custody seal, if present, is intact.	True	
Sample custody seals, if present, are intact.	N/A	
The cooler or samples do not appear to have been compromised or tampered with.	True	
Samples were received on ice.	True	
Cooler Temperature is acceptable.	True	
Cooler Temperature is recorded.	True	3.5°C IR-5
COC is present.	True	
COC is filled out in ink and legible.	True	
COC is filled out with all pertinent information.	True	
Is the Field Sampler's name present on COC?	True	
There are no discrepancies between the containers received and the COC.	True	
Samples are received within Holding Time.	True	
Sample containers have legible labels.	True	
Containers are not broken or leaking.	True	
Sample collection date/times are provided.	True	
Appropriate sample containers are used.	True	
Sample bottles are completely filled.	True	
Sample Preservation Verified.	True	
There is sufficient vol. for all requested analyses, incl. any requested MS/MSDs	True	
Containers requiring zero headspace have no headspace or bubble is <6mm (1/4").	N/A	
Multiphasic samples are not present.	True	
Samples do not require splitting or compositing.	True	
Residual Chlorine Checked.	N/A	



Certification Summary

Client: Escambia County Water Quality Division
 Project/Site: Wedgewood Community Soil Monitoring Plan

TestAmerica Job ID: 400-114676-1
 SDG: Wedgewood Community Ballpark

Laboratory: TestAmerica Pensacola

All certifications held by this laboratory are listed. Not all certifications are applicable to this report.

Authority	Program	EPA Region	Certification ID	Expiration Date
Alabama	State Program	4	40150	12-31-15 *
Arizona	State Program	9	AZ0710	01-11-16
Arkansas DEQ	State Program	6	88-0689	09-01-16
Florida	NELAP	4	E81010	06-30-16
Georgia	State Program	4	N/A	06-30-16
Illinois	NELAP	5	200041	10-09-16
Iowa	State Program	7	367	07-31-16
Kansas	NELAP	7	E-10253	01-31-16 *
Kentucky (UST)	State Program	4	53	06-30-16
Kentucky (WW)	State Program	4	98030	12-31-15
Louisiana	NELAP	6	30976	06-30-16
Maryland	State Program	3	233	09-30-16
Massachusetts	State Program	1	M-FL094	06-30-16
Michigan	State Program	5	9912	06-30-16
New Jersey	NELAP	2	FL006	06-30-16
North Carolina (WW/SW)	State Program	4	314	12-31-15
Oklahoma	State Program	6	9810	08-31-16
Pennsylvania	NELAP	3	68-00467	01-31-16
Rhode Island	State Program	1	LAO00307	12-30-15
South Carolina	State Program	4	96026	06-30-16
Tennessee	State Program	4	TN02907	06-30-16
Texas	NELAP	6	T104704286-15-9	09-30-16
USDA	Federal		P330-13-00193	07-01-16
Virginia	NELAP	3	460166	06-14-16
West Virginia DEP	State Program	3	136	06-30-16

* Certification renewal pending - certification considered valid.





- 1
- 2
- 3
- 4
- 5
- 6
- 7
- 8
- 9
- 10
- 11
- 12
- 13
- 14
- 15

Report for:

Ms. Carolyn Hooper
TestAmerica-Pensacola
3355 McLemore Drive
Pensacola, FL 32514

Regarding: Project: 400-114676-1; Wedgewood Community Soil Monitoring Plan
EML ID: 1464616

Approved by:

Dates of Analysis:
Asbestos PLM: 12-09-2015

Approved Signatory
Noah Lazarte

Service SOPs: Asbestos PLM (EPA Methods 600/R-93/116 & 600/M4-82-020, SOP EM-AS-S-1267)

All samples were received in acceptable condition unless noted in the Report Comments portion in the body of the report. The results relate only to the items tested. The results include an inherent uncertainty of measurement associated with estimating percentages by polarized light microscopy. Measurement uncertainty data for sample results with >1% asbestos concentration can be provided when requested.

EMLab P&K ("the Company") shall have no liability to the client or the client's customer with respect to decisions or recommendations made, actions taken or courses of conduct implemented by either the client or the client's customer as a result of or based upon the Test Results. In no event shall the Company be liable to the client with respect to the Test Results except for the Company's own willful misconduct or gross negligence nor shall the Company be liable for incidental or consequential damages or lost profits or revenues to the fullest extent such liability may be disclaimed by law, even if the Company has been advised of the possibility of such damages, lost profits or lost revenues. In no event shall the Company's liability with respect to the Test Results exceed the amount paid to the Company by the client therefor.

Client: TestAmerica-Pensacola
 C/O: Ms. Carolyn Hooper
 Re: 400-114676-1; Wedgewood Community Soil
 Monitoring Plan

Date of Sampling: 12-03-2015
 Date of Receipt: 12-04-2015
 Date of Report: 12-09-2015

ASBESTOS PLM REPORT: EPA-600/M4-82-020 & EPA METHOD 600/R-93-116

Total Samples Submitted: 5
Total Samples Analyzed: 5
Total Samples with Layer Asbestos Content > 1%: 0

Location: 400-114676-1, SWSC

Lab ID-Version‡: 6762691-1

Sample Layers	Asbestos Content
Red Soil	ND
Composite Non-Asbestos Content:	< 1% Cellulose
Sample Composite Homogeneity:	Moderate

Comments: Due to the nature of a soil/rock sample, making proper slide mounts was not possible. It is recommended that the sample be analyzed using the CARB 435 method.

Location: 400-114676-2, LEWIS POWELL PARK - NORTH

Lab ID-Version‡: 6762692-1

Sample Layers	Asbestos Content
Red Soil	ND
Composite Non-Asbestos Content:	< 1% Cellulose
Sample Composite Homogeneity:	Moderate

Comments: Due to the nature of a soil/rock sample, making proper slide mounts was not possible. It is recommended that the sample be analyzed using the CARB 435 method.

Location: 400-114676-3, LEWIS POWELL PARK - SOUTH

Lab ID-Version‡: 6762693-1

Sample Layers	Asbestos Content
Red Soil	ND
Composite Non-Asbestos Content:	< 1% Cellulose
Sample Composite Homogeneity:	Moderate

Comments: Due to the nature of a soil/rock sample, making proper slide mounts was not possible. It is recommended that the sample be analyzed using the CARB 435 method.

Location: 400-114676-4, WEDGEWOOD PAVILLION

Lab ID-Version‡: 6762694-1

Sample Layers	Asbestos Content
Brown Soil	ND
Composite Non-Asbestos Content:	2% Cellulose
Sample Composite Homogeneity:	Moderate

Comments: Due to the nature of a soil/rock sample, making proper slide mounts was not possible. It is recommended that the sample be analyzed using the CARB 435 method.

The test report shall not be reproduced except in full, without written approval of the laboratory. The report must not be used by the client to claim product certification, approval, or endorsement by NVLAP, NIST, or any agency of the federal government. EMLab P&K reserves the right to dispose of all samples after a period of thirty (30) days, according to all state and federal guidelines, unless otherwise specified.

Inhomogeneous samples are separated into homogeneous subsamples and analyzed individually. ND means no fibers were detected. When detected, the minimum detection and reporting limit is less than 1% unless point counting is performed. Floor tile samples may contain large amounts of interference material and it is recommended that the sample be analyzed by gravimetric point count analysis to lower the detection limit and to aid in asbestos identification.

‡ A "Version" indicated by "-x" after the Lab ID# with a value greater than 1 indicates a sample with amended data. The revision number is reflected by the value of "x".



EMLab P&K

4955 Yarrow Street , Arvada, CO 80002
(800) 651-4802 Fax (623) 780-7695 www.emlab.com

Client: TestAmerica-Pensacola
C/O: Ms. Carolyn Hooper
Re: 400-114676-1; Wedgewood Community Soil
Monitoring Plan

Date of Sampling: 12-03-2015
Date of Receipt: 12-04-2015
Date of Report: 12-09-2015

ASBESTOS PLM REPORT: EPA-600/M4-82-020 & EPA METHOD 600/R-93-116

Location: 400-114676-5, WEDGEWOOD PLAYGROUND

Lab ID-Version‡: 6762695-1

Sample Layers	Asbestos Content
Brown Soil	ND
Composite Non-Asbestos Content:	2% Cellulose
Sample Composite Homogeneity:	Moderate

Comments: Due to the nature of a soil/rock sample, making proper slide mounts was not possible. It is recommended that the sample be analyzed using the CARB 435 method.

The test report shall not be reproduced except in full, without written approval of the laboratory. The report must not be used by the client to claim product certification, approval, or endorsement by NVLAP, NIST, or any agency of the federal government. EMLab P&K reserves the right to dispose of all samples after a period of thirty (30) days, according to all state and federal guidelines, unless otherwise specified.

Inhomogeneous samples are separated into homogeneous subsamples and analyzed individually. ND means no fibers were detected. When detected, the minimum detection and reporting limit is less than 1% unless point counting is performed. Floor tile samples may contain large amounts of interference material and it is recommended that the sample be analyzed by gravimetric point count analysis to lower the detection limit and to aid in asbestos identification.

‡ A "Version" indicated by "-x" after the Lab ID# with a value greater than 1 indicates a sample with amended data. The revision number is reflected by the value of "x".

TestAmerica Pensacola
 3355 McLemore Drive
 Pensacola, FL 32514
 Phone (950) 474-1001 Fax (950) 478-2871

Chain of Custody Record

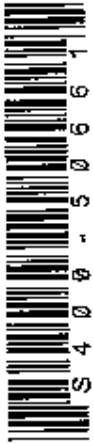
TestAmerica
 THE LEADER IN ENVIRONMENTAL TESTING



Client Information (Sub Contract Lab)		Lab #/ID: Hopper, Carolyn D		Center/Testing Note:	
Client Contact: Shipping/Receiving		E-Mail: carolyn.hopper@testamerica.com		Page: 1 of 1	
Company: EM&B P&K		PO #:		Job #: 400-114670-1	
Address: 4065 Yarrow Street,		TAT Requested (days):		Preservation Codes:	
City: Anyeda		Project #:		A - HCL B - NH ₄ ⁺ C - Zn Acetate D - Ni/As/Br E - Ni/As/Br F - MeQP G - Amobar H - Acetic Acid I - Ice J - DI Water K - CDTA L - ZBA Other:	
State, Zip: CO, 80002		40026373		M - Hexane N - Nona O - ALV/O2 P - Na2SO4 R - Na2S2O3 S - H2SO4 T - TSP Dodecahydrate U - Acetone V - MCAA W - pH 4.5 X - other (specify):	
Phone:		SSOWA		Y - 2BA	
Email:		Sample Date:		Z - other (specify):	
Project Name: Wedgewood Community Soil Monitoring Plan		Sample Time:		Special Instructions/Note:	
Site:		Sample Date:		12/14/15 17:30	
Sample Identification - Client ID (Lab ID)		Sample Time		12/14/15 17:30	
SWSC (400-114670-1)		12/3/15		12/3/15	
LEWIS POWELL PARK - NORTH (400-114670-2)		12/3/15		12/3/15	
LEWIS POWELL PARK - SOUTH (400-114670-3)		12/3/15		12/3/15	
WEDGEWOOD PAVILLION (400-114670-4)		12/3/16		12/3/16	
WEDGEWOOD PLAYGROUND (400-114670-5)		12/3/16		12/3/16	
Possible Hazard Identification		Sample Date		Sample Time	
Unconfirmed		12/3/15		17:30	
Deliverable Requested: I, II, III, IV, Other (specify)		Date:		Time:	
Empty Kit Relinquished by:		Date:		Time:	
Relinquished by:		Date:		Time:	
Relinquished by:		Date:		Time:	
Relinquished by:		Date:		Time:	
Custody Seals Intact: Yes <input type="checkbox"/> No <input type="checkbox"/>		Custody Seal No.:		Cooler Temperature: °C and Other Remarks:	



Shipping Order Form



TestAmerica Pensacola
 3355 McLemore Drive
 Pensacola, FL 32514
 Phone (850) 474-1001 Fax (850) 478-2671

Shipping Order ID: 50661

Ship Via: FedEx Std Overnight

Due On: 12/3/2015 4:59:00PM

Ship To Information

Project Manager:
 Company Name: **EM/ Lab P&K**
 Attention: **Attn: Shipping/Receiving**
 Address 1: **4955 Yarrow Street**
 Address 2:
 Address 3:
 City: **Arvada**
 State: **CO**
 Zip: **80002**
 Phone #:
 Project Ref:



001464616

Notes to Bottle/Shipping Department

Rebill Freight Labels on Coolers

Shipping Assets

Assets	Quantity	Description	Filled
			<input type="checkbox"/>

John Lee
 12/14/15
 17:30

Please notify us immediately if an error is found in shipment



Bottle Order Information

Bottle Order:
Bottle Order #: Request From Client: 12/3/2015
Date Order Posted: Ready To Process
Order Status:
Prepared By:
Deliver By Date: 12/3/2015 4:59:00PM
Lab Project Number:

Order Completion Information

Creator: Lauren Crawford
Filled by:
Sent Date:
Sent Via:
Tracking #:

Sets	Bottles/Set	Qty	Bottle Type	Description	Preservative	Method	Matrix	Sample Type	Comments	Lot #
Health and Safety Notes Preservative										
Comment										



001464616

Jan 16 12/11/15 17:30

Relinquished By	Company	Date	Time	Received By	Company	Seal #	Seal #	Seal #	Seal #	Seal #
Relinquished By	Company	Date	Time	Received By	Company	Seal #	Seal #	Seal #	Seal #	Seal #

Please notify us immediately if an error is found in shipment



Appendix II
Field Data Sheets

Escambia County WQLM
Water Quality Report Form

Agency		Station	Water Collection Depth: <input type="checkbox"/> 0.15m(0.5') <input type="checkbox"/> Other:	Intermediate Bottle Triple Rinsed <input type="checkbox"/>
		<i>Northwest Sports Complex</i>	Date <i>12.3.2015</i>	Time of Grab Sample <i>1020</i> <input checked="" type="checkbox"/> CST <input type="checkbox"/> EST

Water (check as appropriate)	Soils/Sediment	Tissue	Collection Mode
Surface Water <input type="checkbox"/>	Equip Blank <input type="checkbox"/>	Terrestrial <input checked="" type="checkbox"/>	Fish <input type="checkbox"/>
Ground Water <input type="checkbox"/>	Field Blank <input type="checkbox"/>	Freshwater Sed <input type="checkbox"/>	Shellfish <input type="checkbox"/>
Waste Water <input type="checkbox"/>	Trip Blank <input type="checkbox"/>	Marine Sed <input type="checkbox"/>	Other <input type="checkbox"/>
Other:	Duplicate <input type="checkbox"/>	Sludge <input type="checkbox"/>	

All Other Samples unless otherwise noted Other: Ice

Biological Sample Collected: Macroinvertebrates Phytoplankton Periphyton AGP

Meter ID Num:	Equipmt Used:	Sample Container <input checked="" type="checkbox"/> Pole <input type="checkbox"/>	Equipmt ID Num:
	Syringe <input type="checkbox"/> Van Dorn <input type="checkbox"/> Other		<input type="checkbox"/> Field Cleaned

Remarks: Module number: 1306

*3' 15.5' 23' from pitche-plate @ 0°, 270°, 180°, 90°
4" long surface scrape*

LOCATION *Pitche Plate*
30° 23' 05.5" N
Lat: N *87° 23' 53.6"* Long: W

Parameter	Unit	Code	Field Value	Parameter	Unit	Code	Lab Request
Field Identity	Number	29		Conductivity Lab	UMHO	95	
Temp. Water	°C	10		pH Lab	Std. Unit	403	
Temp. Air	°C	20		Turbidity, HACH	NTU	76	
Precipitation (24hr)	Inches	45	<i>Y</i>	Color	PT-CO	80	
Cloud Cover	Percent	32	<i>100</i>	BOD, 5 Day	mg/L	310	
Wind Velocity	MPH	35		NFLT Residue	mg/L	530	
Wind Dir. From	Degrees	36		N-NH3, Total	mg/L	610	
Tide Stage	Code	67		Un-Ionized NH3	mg/L	619	
Water Depth, Max	Meters	82903		N-TKN	mg/L	625	
Secchi	Meters	78		N-NO2 +NO3	mg/L	630	
Meter Sample Depth	Meters	98		Phos-Total	mg/L	665	
Conductivity Field	UMHO	94		Enterococcus	#/100mL	31649	
Salinity	PPTH	480		Total Coliform	#/100mL	31501	
DO Probe	mg/L	299		Fecal Coliform	#/100mL	31616	
DO % Saturation	Percent	301		Chlorophyll A	UG/L	32210	
pH Field	Std. Unit	400		Chlorophyll A	Corrected	32211	

Samplers: *M. Taylor, A. McCann* Report Prepared By: *D. Martin*

WQ Measurements: Documentation: Report Verified By:

Sample Collection: *M. Taylor A. McCann* - Samples are ambient water and not suspected to contain chlorine"

** red clay*

Escambia County WQLM
Water Quality Report Form

Water Collection Depth: <input type="checkbox"/> 0.15m(0.5') <input type="checkbox"/> Other:		Intermediate Bottle Triple Rinsed <input type="checkbox"/>
Agency	Station <i>Lewis Powell Park - North</i>	Date <i>12.3.2015</i>
Time of Grab Sample <i>1115</i>		<input checked="" type="checkbox"/> CST <input type="checkbox"/> EST

Water (check as appropriate)	Soils/Sediment	Tissue	Collection Mode
Surface Water <input type="checkbox"/>	Equip Blank <input type="checkbox"/>	Terrestrial <input checked="" type="checkbox"/>	by Foot <input checked="" type="checkbox"/> <input type="checkbox"/> by Boat
Ground Water <input type="checkbox"/>	Field Blank <input type="checkbox"/>	Freshwater Sed <input type="checkbox"/>	Wading <input type="checkbox"/> <input type="checkbox"/> Canoe
Waste Water <input type="checkbox"/>	Trip Blank <input type="checkbox"/>	Marine Sed <input type="checkbox"/>	On Shore <input type="checkbox"/> <input type="checkbox"/> Gas Motor
Other:	Duplicate <input type="checkbox"/>	Sludge <input type="checkbox"/>	

All Other Samples unless otherwise noted Other: Ice

Biological Sample Collected: Macroinvertebrates Phytoplankton Periphyton AGP

Meter ID Num:	Equipmt Used: <input checked="" type="checkbox"/> Sample Container <input checked="" type="checkbox"/> Pole <input type="checkbox"/> Syringe <input type="checkbox"/> Van Dorn <input type="checkbox"/> Other	Equipmt ID Num: <input type="checkbox"/> Field Cleaned
---------------	---	--

Remarks: *smaller ball field north of gate*
0° 90° 180° 270°

Module number: 1306

LOCATION *30° 29' 25.1" N*
87° 16' 32.7" W

Lat: N Long: W

Parameter	Unit	Code	Field Value	Parameter	Unit	Code	Lab Request
Field Identity	Number	29		Conductivity Lab	UMHO	95	
Temp. Water	°C	10		pH Lab	Std. Unit	403	
Temp. Air	°C	20		Turbidity, HACH	NTU	76	
Precipitation (24hr)	Inches	45	<i>4</i>	Color	PT-CO	80	
Cloud Cover	Percent	32	<i>100</i>	BOD, 5 Day	mg/L	310	
Wind Velocity	MPH	35		NFLT Residue	mg/L	530	
Wind Dir. From	Degrees	36		N-NH3, Total	mg/L	610	
Tide Stage	Code	67		Un-ionized NH3	mg/L	619	
Water Depth, Max	Meters	82903		N-TKN	mg/L	625	
Secchi	Meters	78		N-NO2 +NO3	mg/L	630	
Meter Sample Depth	Meters	98		Phos-Total	mg/L	665	
Conductivity Field	UMHO	94		Enterococcus	#/100mL	31649	
Salinity	PPTH	480		Total Coliform	#/100mL	31501	
DO Probe	mg/L	299		Fecal Coliform	#/100mL	31616	
DO % Saturation	Percent	301		Chlorophyll A	UG/L	32210	
pH Field	Std. Unit	400		Chlorophyll A	Corrected	32211	

Samplers: *M. Taylor, D. Moton, A. McCarver*

Report Prepared By:

WQ Measurements: Documentation: *MT*

Report Verified By:

Sample Collection: *MT, AM DM* "Samples are ambient water and not suspected to contain chlorine"

Escambia County WQLM
Water Quality Report Form

Agency		Station <i>Henry Powell Park South</i>		Water Collection Depth: <input type="checkbox"/> 0.15m(0.5') <input type="checkbox"/> Other:		Intermediate Bottle Triple Rinsed <input type="checkbox"/>	
Date <i>12.3.2015</i>		Time of Grab Sample <i>1140</i>		<input checked="" type="checkbox"/> CST		<input type="checkbox"/> EST	
Water (check as appropriate)		Soils/Sediment		Tissue		Collection Mode	
Surface Water <input type="checkbox"/>	Equip Blank <input type="checkbox"/>	Terrestrial <input checked="" type="checkbox"/>	Freshwater Sed <input type="checkbox"/>	Fish <input type="checkbox"/>	Shellfish <input type="checkbox"/>	by Foot <input checked="" type="checkbox"/>	by Boat <input type="checkbox"/>
Ground Water <input type="checkbox"/>	Field Blank <input type="checkbox"/>	Marine Sed <input type="checkbox"/>	Sludge <input type="checkbox"/>	Other <input type="checkbox"/>	On Shore <input type="checkbox"/>	Wading <input type="checkbox"/>	Canoe <input type="checkbox"/>
Waste Water <input type="checkbox"/>	Trip Blank <input type="checkbox"/>	Duplicate <input type="checkbox"/>				Gas Motor <input type="checkbox"/>	
All Other Samples unless otherwise noted				<input type="checkbox"/> Other:		<input checked="" type="checkbox"/> Ice	
Biological Sample Collected:		Macroinvertebrates <input type="checkbox"/>		Phytoplankton <input type="checkbox"/>		Periphyton <input type="checkbox"/>	
AGP <input type="checkbox"/>							
Meter ID		Equipmt		Equipmt ID			
Num:		Sample Container <input type="checkbox"/> Pole <input type="checkbox"/>		Num:		<input type="checkbox"/> Field	
Used:		Syringe <input type="checkbox"/> Van Dorn <input type="checkbox"/> Other				<input type="checkbox"/> Cleaned	
Remarks:		Module number: 1306		LOCATION			
<i>Center 50' from home plate Lanson radius 40'</i>		<i>Lanson Ballfield</i>		<i>30° 29' 23.7" N</i>			
				<i>87 16' 31.6" W</i>			
<i>0° 50' 180° 270° 3' 21.5' 40'</i>		Lat: N		Long: W			
Parameter	Unit	Code	Field Value	Parameter	Unit	Code	Lab Request
Field Identity	Number	29		Conductivity Lab	UMHO	95	
Temp. Water	°C	10		pH Lab	Std. Unit	403	
Temp. Air	°C	20		Turbidity, HACH	NTU	76	
Precipitation (24hr)	Inches	45	<i>4</i>	Color	PT-CO	80	
Cloud Cover	Percent	32	<i>100</i>	BOD, 5 Day	mg/L	310	
Wind Velocity	MPH	35		NFLT Residue	mg/L	530	
Wind Dir. From	Degrees	36		N-NH3, Total	mg/L	610	
Tide Stage	Code	67		Un-ionized NH3	mg/L	619	
Water Depth, Max	Meters	82903		N-TKN	mg/L	625	
Secchi	Meters	78		N-NO2 +NO3	mg/L	630	
Meter Sample Depth	Meters	98		Phos-Total	mg/L	665	
Conductivity Field	UMHO	94		Enterococcus	#/100mL	31649	
Salinity	PPTH	480		Total Coliform	#/100mL	31501	
DO Probe	mg/L	299		Fecal Coliform	#/100mL	31616	
DO % Saturation	Percent	301		Chlorophyll A	UG/L	32210	
pH Field	Std. Unit	400		Chlorophyll A	Corrected	32211	
Samplers: <i>N. Taylor, D. Martou, A. McFarver</i>				Report Prepared By:			
WQ Measurements: Documentation: <i>MT</i>				Report Verified By:			
Sample Collection: <i>MT, AM, DM</i>				"Samples are ambient water and not suspected to contain chlorine"			

Escambia County WQLM
Water Quality Report Form

		Water Collection Depth: <input type="checkbox"/> 0.15m(0.5') <input type="checkbox"/> Other:		Intermediate Bottle Triple Rinsed <input type="checkbox"/>			
Agency	Station <i>Wedgewood Community - Swilling</i>	Date <i>12-3-2015</i>	Time of Grab Sample <i>1215</i> <input checked="" type="checkbox"/> CST <input type="checkbox"/> EST				
Water (check as appropriate)		Soils/Sediment		Tissue			
Surface Water <input type="checkbox"/>	Equip Blank <input type="checkbox"/>	Terrestrial <input checked="" type="checkbox"/>	Fish <input type="checkbox"/>	by Foot <input checked="" type="checkbox"/> <input type="checkbox"/> by Boat			
Ground Water <input type="checkbox"/>	Field Blank <input type="checkbox"/>	Freshwater Sed <input type="checkbox"/>	Shellfish <input type="checkbox"/>	Wading <input type="checkbox"/> <input type="checkbox"/> Canoe			
Waste Water <input type="checkbox"/>	Trip Blank <input type="checkbox"/>	Marine Sed <input type="checkbox"/>	Other <input type="checkbox"/>	On Shore <input type="checkbox"/> <input type="checkbox"/> Gas Motor			
Other:	Duplicate <input type="checkbox"/>	Sludge <input type="checkbox"/>					
All Other Samples unless otherwise noted		<input type="checkbox"/> Other:	<input checked="" type="checkbox"/> Ice				
Biological Sample Collected:		Macroinvertebrates <input type="checkbox"/>	Phytoplankton <input type="checkbox"/>	Periphyton <input type="checkbox"/>	AGP <input type="checkbox"/>		
Meter ID		Equipmt Sample Container <input type="checkbox"/> Pole <input type="checkbox"/>		Equipmt ID <input type="checkbox"/> Field			
Num:		Used: Syringe <input type="checkbox"/> Van Dorn <input type="checkbox"/> Other		Num: <input type="checkbox"/> Cleaned			
Remarks:		Module number: 1306		LOCATION center			
<i>Circle center @ tree closest to the monitoring pole</i>		<i>scope sites</i>		<i>30° 29' 32.7" N</i>			
<i>0° 90° 180° 270° 3', 13.5', 24'</i>				<i>87° 16' 17.5" W</i>			
				Lat: N Long: W			
Parameter	Unit	Code	Field Value	Parameter	Unit	Code	Lab Request
Field Identity	Number	29		Conductivity Lab	UMHO	95	
Temp. Water	°C	10		pH Lab	Std. Unit	403	
Temp. Air	°C	20		Turbidity, HACH	NTU	76	
Precipitation (24hr)	Inches	45	<i>Y</i>	Color	PT-CO	80	
Cloud Cover	Percent	32	<i>100</i>	BOD, 5 Day	mg/L	310	
Wind Velocity	MPH	35		NFLT Residue	mg/L	530	
Wind Dir. From	Degrees	36		N-NH3, Total	mg/L	610	
Tide Stage	Code	67		Un-ionized NH3	mg/L	619	
Water Depth, Max	Meters	82903		N-TKN	mg/L	625	
Secchi	Meters	78		N-NO2 +NO3	mg/L	630	
Meter Sample Depth	Meters	98		Phos-Total	mg/L	665	
Conductivity Field	UMHO	94		Enterococcus	#/100mL	31649	
Salinity	PPTH	480		Total Coliform	#/100mL	31501	
DO Probe	mg/L	299		Fecal Coliform	#/100mL	31616	
DO % Saturation	Percent	301		Chlorophyll A	UG/L	32210	
pH Field	Std. Unit	400		Chlorophyll A	Corrected	32211	
Samplers: <i>M Taylor, D. Martin, A. McClary</i>				Report Prepared By:			
WQ Measurements: Documentation: <i>MT</i>				Report Verified By:			
Sample Collection: <i>MT, DM, AM</i>				"Samples are ambient water and not suspected to contain chlorine"			

Escambia County WQLM
Water Quality Report Form

		Water Collection Depth: <input type="checkbox"/> 0.15m(0.5') <input type="checkbox"/> Other:		Intermediate Bottle Triple Rinsed <input type="checkbox"/>			
Agency	Station <i>Wedgwood Playground</i>	Date <i>12-3-2015</i>	Time of Grab Sample <i>1235</i> <input checked="" type="checkbox"/> CST <input type="checkbox"/> EST				
Water (check as appropriate)		Soils/Sediment <input checked="" type="checkbox"/>		Tissue			
Surface Water <input type="checkbox"/>	Equip Blank <input type="checkbox"/>	Terrestrial <input checked="" type="checkbox"/>	Fish <input type="checkbox"/>	by Foot <input type="checkbox"/> <input type="checkbox"/> by Boat			
Ground Water <input type="checkbox"/>	Field Blank <input type="checkbox"/>	Freshwater Sed <input type="checkbox"/>	Shellfish <input type="checkbox"/>	Wading <input type="checkbox"/> <input type="checkbox"/> Canoe			
Waste Water <input type="checkbox"/>	Trip Blank <input type="checkbox"/>	Marine Sed <input type="checkbox"/>	Other <input type="checkbox"/>	On Shore <input type="checkbox"/> <input type="checkbox"/> Gas Motor			
Other:	Duplicate <input type="checkbox"/>	Sludge <input type="checkbox"/>					
All Other Samples unless otherwise noted		<input type="checkbox"/> Other:	<input checked="" type="checkbox"/> Ice				
Biological Sample Collected:		Macroinvertebrates <input type="checkbox"/>	Phytoplankton <input type="checkbox"/>	Periphyton <input type="checkbox"/>	AGP <input type="checkbox"/>		
Meter ID		Equipmt Sample Container <input type="checkbox"/> Pole <input type="checkbox"/>		Equipmt ID <input type="checkbox"/> Field			
Num:		Used: Syringe <input type="checkbox"/> Van Dorn <input type="checkbox"/> Other		Num: <input type="checkbox"/> Cleaned			
Remarks:		Module number: 1306		LOCATION			
<i>Between picnic pavilion & playground 40' radius 0° 90° 180° 270° 3' 215' 40'</i>		<i>Center @ 30° 29' 35.6" N 87° 16' 20.0" W</i>		Lat: N			
				Long: W			
Parameter	Unit	Code	Field Value	Parameter	Unit	Code	Lab Request
Field Identity	Number	29		Conductivity Lab	UMHO	95	
Temp. Water	°C	10		pH Lab	Std. Unit	403	
Temp. Air	°C	20		Turbidity, HACH	NTU	76	
Precipitation (24hr)	Inches	45	<i>✓</i>	Color	PT-CO	80	
Cloud Cover	Percent	32	<i>100</i>	BOD, 5 Day	mg/L	310	
Wind Velocity	MPH	35		NFLT Residue	mg/L	530	
Wind Dir. From	Degrees	36		N-NH3, Total	mg/L	610	
Tide Stage	Code	67		Un-ionized NH3	mg/L	619	
Water Depth, Max	Meters	82903		N-TKN	mg/L	625	
Secchi	Meters	78		N-NO2 +NO3	mg/L	630	
Meter Sample Depth	Meters	98		Phos-Total	mg/L	665	
Conductivity Field	UMHO	94		Enterococcus	#/100mL	31649	
Salinity	PPTH	480		Total Coliform	#/100mL	31501	
DO Probe	mg/L	299		Fecal Coliform	#/100mL	31616	
DO % Saturation	Percent	301		Chlorophyll A	UG/L	32210	
pH Field	Std. Unit	400		Chlorophyll A	Corrected	32211	
Samplers: <i>MTaylor, D. Morton, AMcCarver</i>				Report Prepared By:			
WQ Measurements:		Documentation: <i>MT</i>		Report Verified By:			
Sample Collection: <i>MT, DM, AM</i>				"Samples are ambient water and not suspected to contain chlorine"			

Wedgwood Ballpark
 April Sampling

12.3.2015

Samplers: M. Taylor, D. Morton,
 A. McCarver

① Northwest Sports Complex
 (Background)

@ 1020

28' ring
 (3, 15.5 and 28')

* Center point of pitchers
 mound

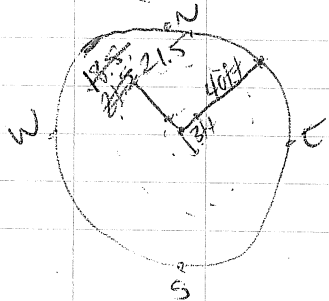
② Lewis Powell Park - North

@ 1115

28' ring

③ Lewis Powell Park - South

@ 1140

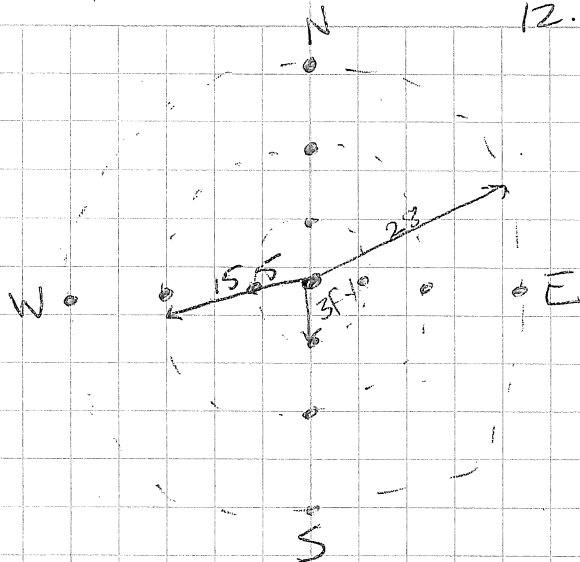


40' ring
 3, 21.5, and 40'

WJ

12.3.2015

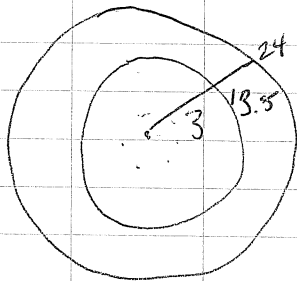
NT



- 4" surface scrap taken at 12 locations 3', 15.5', 28" at the cardinal points
- samples composited on site
- superficial samples were taken off the top 1/2"

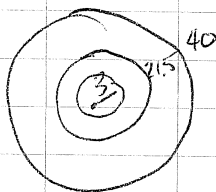
WJ

12.3.2015
 ④ Wedgwood Community Center
 Pavilion @ 9215



Center point
 as tree
 24' ring
 3, 13.5 and 24'

⑤ Wedgwood Playground
 @ 1235



40' ring
 3, 21.5 and 40'

MS

